

COPPER PRESS FITTINGS

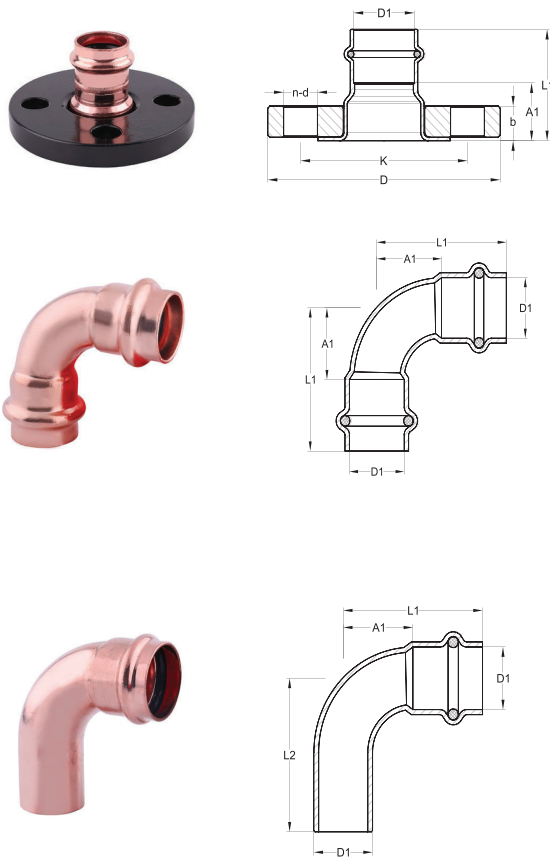


DESCRIPTION:

Press copper fittings are manufactured to the highest standards of quality and fully certified to industry standards for dimensions and material composition.

SPECIFICATIONS:

ASME B16.51
NSF/ANSI61/372
IAPMO Listed



COPPER PRESS ADAPTER FLANGE P X FLANGE

ITEM	SIZE D1	L1	A1	b	D	K	n	d
2106855	2"	2.8"	1.1"	0.6"	5.9"	4.8"	4"	0.8"

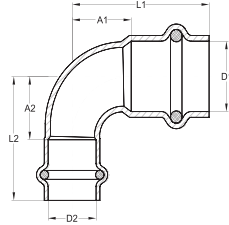
COPPER PRESS 90° ELBOW P X P

ITEM	SIZE D1	L1	A1
2106861	½"	1.6"	0.8"
2106856	¾"	2.0"	1.1"
2106857	1"	2.2"	1.3"
2106858	1¼"	2.6"	1.5"
2106859	1½"	3.2"	1.8"
2106860	2"	3.8"	2.2"

COPPER PRESS 90° STREET ELBOW P X FTG

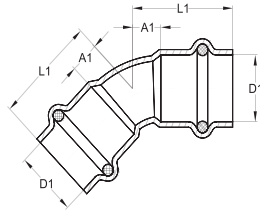
ITEM	SIZE D1	L1	AL1	A1	AL2
2106870	½"	1.6"	0.8"	1.7"	5.9"
2106865	¾"	2.0"	1.1"	2.1"	5.9"
2106866	1"	2.2"	1.3"	2.4"	5.9"
2106867	1¼"	2.6"	1.5"	2.9"	5.9"
2106868	1½"	3.2"	1.8"	3.5"	5.9"
2106869	2"	3.8"	2.2"	4.3"	5.9"

COPPER PRESS FITTINGS



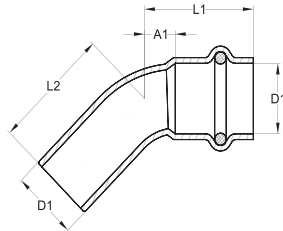
COPPER PRESS 90° REDUCING ELBOW P X P

ITEM	SIZE D1	SIZE D2	AL1	A1	AL2	A2
2106874	¾"	½"	1.8"	0.9"	1.8"	0.9"
2106875	1"	¾"	2.3"	1.4"	2.0"	1.1"



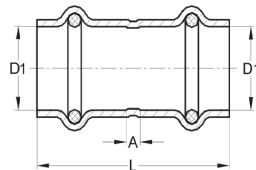
COPPER PRESS 45° ELBOW P X P

ITEM	SIZE D1	L1	A1
2106882	½"	1.1"	0.3"
2106876	¾"	1.4"	0.5"
2106877	1"	1.4"	0.5"
2106878	1¼"	2.0"	0.8"
2106880	1½"	2.3"	0.8"
2106881	2"	2.4"	0.8"



COPPER PRESS 45° STREET ELBOW P X FTG

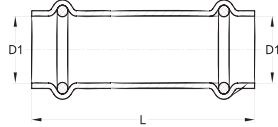
ITEM	SIZE D1	AL1	A1	AL2
2106891	½"	1.1"	0.3"	1.2"
2106886	¾"	1.4"	0.5"	1.5"
2106887	1"	1.5"	0.6"	1.6"
2106888	1¼"	2.0"	0.8"	1.9"
2106889	1½"	2.3"	0.8"	2.4"
2106890	2"	2.4"	0.8"	2.8"



COPPER PRESS STRAIGHT COUPLING P X P

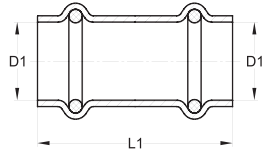
ITEM	SIZE D1	L1	A1
2106898	½"	1.6"	0.1"
2106899	¾"	2.1"	0.2"
2106900	1"	2.1"	0.2"
2106901	1¼"	2.4"	0.2"
2106902	1½"	3.0"	0.2"
2106903	2"	3.4"	0.2"

COPPER PRESS FITTINGS



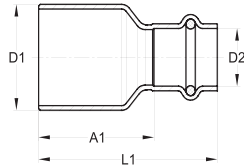
COPPER PRESS SLIP EXTENDED COUPLING P X P

ITEM	SIZE D1	L
2106905	1/2"	3.0"
2106906	3/4"	3.5"
2106904	1"	3.7"



COPPER PRESS SLIP COUPLING P X P

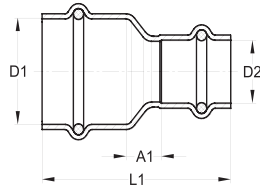
ITEM	SIZE D1	L1
2106907	1/2"	1.7"
2106908	3/4"	2.1"
2106909	1"	2.1"
2106910	1 1/4"	2.4"
2106911	1 1/2"	3.0"
2106912	2"	3.4"



COPPER PRESS BUSHING REDUCER FTG X P

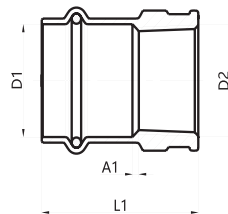
ITEM	SIZE D1	SIZE D2	L1	A1
2106918	3/4"	1/2"	2.1"	1.3"
2106919	1"	1/2"	2.3"	1.5"
2106920	1"	3/4"	2.2"	1.3"
2106917	1 1/4"	1/2"	2.6"	1.8"
2106921	1 1/4"	3/4"	2.6"	1.7"
2106922	1 1/4"	1"	2.5"	1.6"
2106953	1 1/2"	1/2"	3.0"	2.2"
2106916	1 1/2"	3/4"	3.1"	2.2"
2106923	1 1/2"	1"	3.0"	2.0"
2106924	1 1/2"	1 1/4"	3.0"	1.9"
2106954	2"	1/2"	3.7"	2.9"
2106955	2"	3/4"	3.7"	2.8"
2106925	2"	1"	3.5"	2.6"
2106926	2"	1 1/4"	3.6"	2.4"
2106927	2"	1 1/2"	3.7"	2.2"

COPPER PRESS FITTINGS



COPPER PRESS COUPLING REDUCER P X P

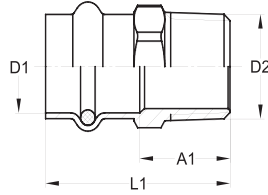
ITEM	SIZE D1	SIZE D2	L1	A1
2106935	3/4"	1/2"	2.1"	0.4"
2106930	1"	1/2"	2.3"	0.5"
2106936	1"	3/4"	2.2"	0.4"
2106929	1 1/4"	3/4"	2.7"	0.6"
2106937	1 1/4"	1"	2.5"	0.4"
2106933	1 1/2"	3/4"	3.2"	0.8"
2106928	1 1/2"	1"	3.0"	0.6"
2106938	1 1/2"	1 1/4"	3.1"	0.5"
2106932	2"	3/4"	3.8"	1.2"
2106931	2"	1"	3.5"	1.0"
2106934	2"	1 1/4"	3.6"	0.8"
2106939	2"	1 1/2"	3.8"	0.7"



COPPER PRESS FEMALE ADAPTER P X FPT

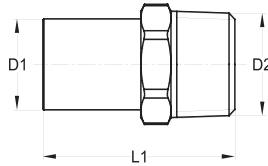
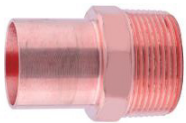
ITEM	SIZE D1	SIZE D2	L1	A1
2106978	1/2"	1/2" FPT	1.6"	0.3"
2106979	1/2"	3/4" FPT	1.7"	0.2"
2106980	3/4"	1/2" FPT	1.6"	0.2"
2106981	3/4"	3/4" FPT	1.8"	0.2"
2106982	1"	1/2" FPT	2.1"	0.6"
2106983	1"	3/4" FPT	1.7"	0.1"
2106984	1"	1" FPT	1.9"	0.2"
2106985	1"	1 1/4" FPT	2.1"	0.3"
2106986	1 1/4"	1" FPT	2.1"	0.2"
2106987	1 1/4"	1 1/4" FPT	2.2"	0.2"
2106988	1 1/4"	1 1/2" FPT	2.2"	0.2"
2106989	1 1/2"	1 1/2" FPT	2.5"	0.2"
2106990	2"	2" FPT	2.8"	0.2"

COPPER PRESS FITTINGS



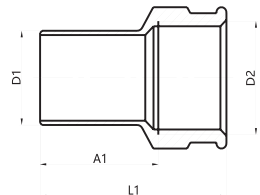
COPPER PRESS MALE ADAPTER P X MPT

ITEM	SIZE D1	SIZE D2	L1	A1
2106962	½"	⅜" MPT	1.7"	0.8"
2106963	½"	½" MPT	1.7"	0.9"
2106964	½"	¾" MPT	1.8"	1.0"
2106965	¾"	½" MPT	1.9"	0.9"
2106966	¾"	¾" MPT	1.9"	0.9"
2106967	¾"	1" MPT	2.0"	1.1"
2106968	1"	¾" MPT	1.9"	1.0"
2106969	1"	1" MPT	1.9"	1.0"
2106970	1"	1¼" MPT	2.1"	1.1"
2106971	1¼"	1" MPT	2.2"	1.1"
2106972	1¼"	1¼" MPT	2.2"	1.1"
2106973	1¼"	1½" MPT	2.3"	1.1"
2106974	1½"	1½" MPT	2.6"	1.2"
2106975	1½"	2" MPT	2.6"	1.2"
2106976	2"	1½" MPT	2.8"	1.2"
2106977	2"	2" MPT	2.8"	1.2"



COPPER PRESS MALE STREET ADAPTER FTG X MPT

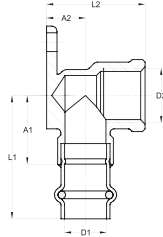
ITEM	SIZE D1	SIZE D2	L1
2106991	½"	½" MPT	1.8"
2106992	¾"	¾" MPT	2.0"
2106993	1"	1" MPT	2.1"
2106994	1¼"	1¼" MPT	2.5"
2106995	1½"	1½" MPT	2.9"
2106996	2"	2" MPT	3.2"



COPPER PRESS FEMALE STREET ADAPTER FTG X FPT

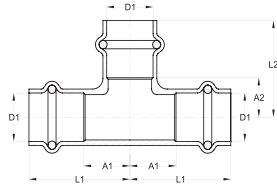
ITEM	SIZE D1	SIZE D2	L1	A1
2106997	½"	½" FPT	1.7"	1.2"
2106998	½"	¾" FPT	1.9"	1.3"
2106999	¾"	¾" FPT	1.9"	1.3"
2107000	1"	1" FPT	2.0"	1.3"
2107001	1¼"	1¼" FPT	2.3"	1.5"
2107002	1½"	1½" FPT	2.6"	1.8"

COPPER PRESS FITTINGS



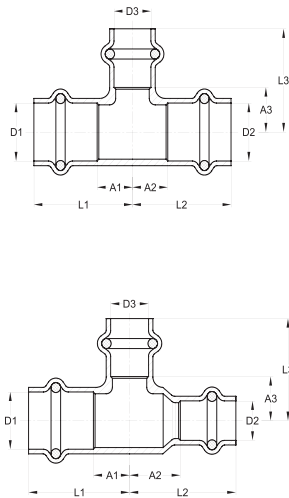
COPPER PRESS 90° DROP EAR ELBOW P X FPT

ITEM	SIZE D1	SIZE D2	L1	A1	L2	A2
2107091	1/2"	1/2" FPT	1.8"	0.9"	1.5"	0.6"
2107092	3/4"	3/4" FPT	2.1"	1.2"	1.8"	0.7"



COPPER PRESS EQUAL TEE P X P X P

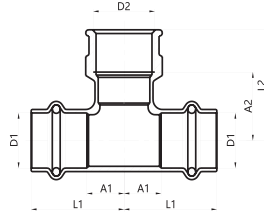
ITEM	SIZE D1	L1	A1	L2	A2
2107027	1/2"	1.6"	0.7"	1.3"	0.5"
2107032	3/4"	1.8"	0.8"	1.6"	0.6"
2107034	1"	1.9"	1.0"	1.7"	0.8"
2107040	1 1/4"	2.1"	1.0"	2.0"	0.8"
2107043	1 1/2"	2.6"	1.2"	2.8"	1.3"
2107047	2"	3.0"	1.4"	3.1"	1.5"



COPPER PRESS UNEQUAL TEE P X P X P

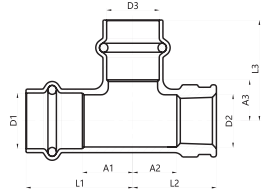
ITEM	SIZE D1	SIZE D2	SIZE D3	L1	A1	L2	A2	L3	A3
2107028	1/2"	1/2"	3/4"	1.7"	0.9"	1.7"	0.9"	1.5"	0.6"
2107006	1/2"	1/2"	1"	1.7"	0.9"	1.7"	0.9"	1.7"	0.8"
2107029	3/4"	1/2"	1/2"	1.6"	0.7"	1.8"	0.9"	1.4"	0.6"
2107030	3/4"	1/2"	3/4"	1.8"	0.8"	1.9"	1.1"	1.6"	0.7"
2107031	3/4"	3/4"	1/2"	1.6"	0.7"	1.6"	0.7"	1.4"	0.6"
2107033	3/4"	3/4"	1"	1.9"	1.0"	1.9"	1.0"	2.0"	1.1"
2107035	1"	1/2"	3/4"	1.8"	0.8"	2.1"	1.3"	1.7"	0.8"
2107036	1"	3/4"	3/4"	1.8"	0.8"	2.0"	1.1"	1.7"	0.8"
2107037	1"	3/4"	1"	1.9"	1.0"	2.2"	1.2"	1.7"	0.8"
2107038	1"	1"	1/2"	1.6"	0.7"	1.6"	0.7"	1.6"	0.8"
2107039	1"	1"	3/4"	1.8"	0.8"	1.8"	0.8"	1.7"	0.8"
2107009	1 1/4"	3/4"	3/4"	1.9"	0.7"	2.3"	1.3"	2.0"	1.0"
2107008	1 1/4"	3/4"	1 1/4"	2.1"	1.0"	2.4"	1.5"	2.0"	0.8"
2107062	1 1/4"	1"	3/4"	1.9"	0.7"	2.1"	1.2"	2.0"	1.0"
2107003	1 1/4"	1"	1"	2.0"	0.8"	2.2"	1.3"	2.0"	1.1"
2107061	1 1/4"	1 1/4"	1/2"	1.8"	0.6"	1.8"	0.6"	1.9"	1.1"
2107042	1 1/4"	1 1/4"	3/4"	1.9"	0.7"	1.9"	0.7"	2.0"	1.0"
2107041	1 1/4"	1 1/4"	1"	2.0"	0.8"	2.0"	0.8"	2.0"	1.1"
2107005	1 1/2"	1"	1"	2.3"	0.8"	2.4"	1.4"	2.1"	1.1"
2107004	1 1/2"	1 1/2"	1/2"	1.9"	0.5"	1.9"	0.5"	1.9"	1.1"
2107044	1 1/2"	1 1/2"	3/4"	2.1"	0.7"	2.1"	0.7"	2.1"	1.1"
2107045	1 1/2"	1 1/2"	1"	2.3"	0.8"	2.3"	0.8"	2.1"	1.1"
2107046	1 1/2"	1 1/2"	1 1/4"	2.4"	0.9"	2.4"	0.9"	2.2"	1.1"
2107007	2"	2"	1/2"	2.4"	0.8"	2.4"	0.8"	2.5"	1.7"
2107064	2"	2"	3/4"	2.4"	0.8"	2.4"	0.8"	2.4"	1.5"
2107063	2"	2"	1"	2.5"	0.9"	2.5"	0.9"	2.4"	1.5"
2107049	2"	2"	1 1/4"	2.7"	1.0"	2.7"	1.0"	2.6"	1.5"
2107048	2"	2"	1 1/2"	2.8"	1.2"	2.8"	1.2"	3.0"	1.5"

COPPER PRESS FITTINGS



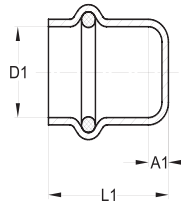
COPPER PRESS FEMALE TEE REDUCER P X P X FPT

ITEM	SIZE D1	SIZE D2	L1	A1	L2	A2
2107050	½"	½" FPT	1.6"	0.7"	1.4"	0.9"
2107051	¾"	½" FPT	1.8"	0.8"	1.4"	0.8"
2107052	¾"	¾" FPT	1.8"	0.8"	1.6"	1.0"
2107053	1"	½" FPT	1.8"	0.8"	1.7"	1.2"
2107054	1"	¾" FPT	1.9"	1.0"	1.9"	1.2"
2107055	1¼"	½" FPT	1.9"	0.7"	1.7"	1.1"
2107056	1¼"	¾" FPT	2.0"	0.8"	1.8"	1.2"
2107057	1½"	½" FPT	2.1"	0.7"	1.8"	1.3"
2107058	1½"	¾" FPT	2.3"	0.8"	2.0"	1.3"
2107059	2"	½" FPT	2.5"	0.9"	2.1"	1.5"
2107060	2"	¾" FPT	2.5"	0.9"	2.3"	1.7"



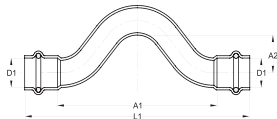
COPPER PRESS FEMALE TEE REDUCER P X FPT X P

ITEM	SIZE D1	SIZE D2	SIZE D3	AL1	A1	AL2	A2	AL3	A3
2107093	¾"	½" FPT	¾"	1.8"	0.8"	1.6"	1.3"	1.6"	0.7"



COPPER PRESS CAP P

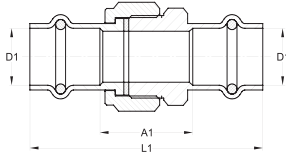
ITEM	SIZE D1	L1	A1
2107084	½"	0.9"	0.1"
2107085	¾"	1.1"	0.1"
2107086	1"	1.1"	0.1"
2107087	1¼"	1.3"	0.1"
2107088	1½"	1.7"	0.2"
2107089	2"	1.9"	0.2"



COPPER PRESS CROSS OVER P X P

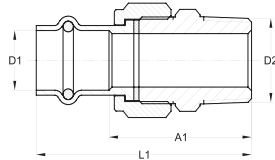
ITEM	SIZE D1	L1	A1	A2
2107090	½"	5.2"	3.6"	0.8"

COPPER PRESS FITTINGS



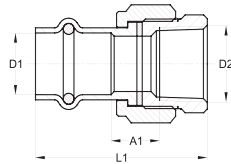
COPPER PRESS UNION P X P

ITEM	SIZE D1	L1	A1
2107068	½"	2.8"	1.2"
2107069	¾"	3.0"	1.1"
2107070	1"	3.0"	1.1"
2107071	1¼"	3.4"	1.1"
2107072	1½"	4.1"	1.2"
2107073	2"	4.6"	1.3"



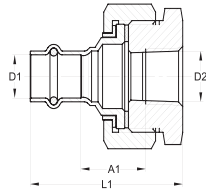
COPPER PRESS MALE UNION P X MPT

ITEM	SIZE D1	SIZE D2	L1	A1
2107066	½"	½" MPT	2.6"	1.8"
2107067	¾"	¾" MPT	2.7"	1.8"
2107065	1"	1" MPT	2.9"	1.9"



COPPER PRESS FEMALE UNION P X FPT

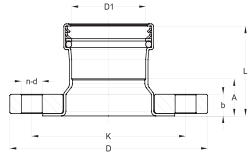
ITEM	SIZE D1	SIZE D2	L1	A1
2107078	¾"	¾" FPT	2.1"	0.6"
2107079	1"	1" FPT	2.3"	0.6"
2107080	2"	2" FPT	3.3"	0.7"



COPPER PRESS DIELECTRIC FEMALE UNION P X FPT

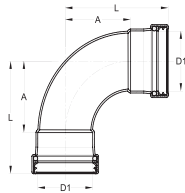
ITEM	SIZE D1	SIZE D2	L1	A1
2107074	1"	1" FPT	2.8"	1.1"
2107075	1¼"	1¼" FPT	3.0"	1.1"
2107076	1½"	1½" FPT	3.5"	1.2"
2107077	2"	2" FPT	3.8"	1.2"

COPPER PRESS FITTINGS



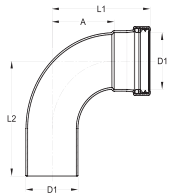
COPPER PRESS XL ADAPTER FLANGE P X FLANGE

ITEM	SIZE D1	L1	A1	b	D	K	n	d
2106852	2½"	2.8"	1.1"	0.7"	7.1"	5.5"	4"	0.75"
2106853	3"	3.4"	1.3"	0.8"	7.5"	6.0"	4"	0.75"
2106854	4"	3.7"	1.3"	0.9"	9.1"	7.5"	8"	0.75"



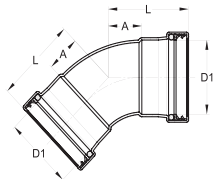
COPPER PRESS XL 90° ELBOW P X P

ITEM	SIZE D1	L1	A1
2106862	2½"	4.9"	3.2"
2106863	3"	5.7"	3.8"
2106864	4"	7.3"	4.9"



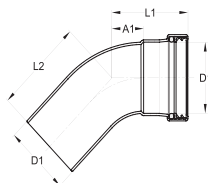
COPPER PRESS XL 90° STREET ELBOW P X FTG

ITEM	SIZE D1	AL1	A1	AL2
2106871	2½"	4.9"	3.2"	5.4"
2106872	3"	5.7"	3.8"	6.3"
2106873	4"	7.3"	4.9"	7.8"



COPPER PRESS XL 45° ELBOW P X P

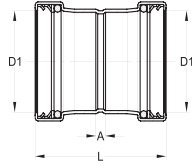
ITEM	SIZE D1	L1	A1
2106883	2½"	3.2"	1.5"
2106884	3"	3.7"	1.7"
2106885	4"	4.6"	2.3"



COPPER PRESS XL 45° STREET ELBOW P X FTG

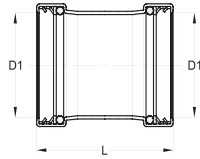
ITEM	SIZE D1	AL1	A1	AL2
2106892	2½"	3.2"	1.5"	3.6"
2106893	3"	3.7"	1.7"	4.1"
2106894	4"	4.6"	2.3"	5.1"

COPPER PRESS FITTINGS



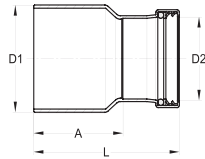
COPPER PRESS XL STRAIGHT COUPLING P X P

ITEM	SIZE D1	L1	A1
2106895	2½"	4.3"	0.9"
2106896	3"	4.9"	1.0"
2106897	4"	5.8"	1.1"



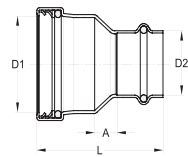
COPPER PRESS XL SLIP COUPLING P X P

ITEM	SIZE D1	L1
2106913	2½"	4.3"
2106914	3"	4.9"
2106915	4"	5.8"



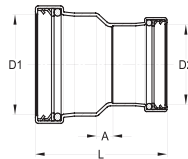
COPPER PRESS BUSHING REDUCER

ITEM	SIZE D1	SIZE D2	L1	A1
2106952	2½"	1½"	4.3"	2.8"
2106946	2½"	2"	4.3"	2.6"
2106947	3"	2"	4.8"	3.2"
2106948	3"	2½"	4.5"	2.8"
2106949	4"	2"	6.2"	4.6"
2106950	4"	2½"	5.8"	4.1"
2106951	4"	3"	5.7"	3.7"

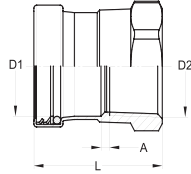


COPPER PRESS XL COUPLING REDUCER P X P

ITEM	SIZE D1	SIZE D2	L1	A1
2106940	2½"	1¼"	4.2"	1.4"
2106941	2½"	1½"	4.4"	1.2"
2106942	2½"	2"	4.3"	1.0"
2106943	3"	2"	4.8"	1.2"
2106944	3"	2½"	4.9"	1.5"
2106945	4"	3"	5.5"	1.2"
2106951	4"	3"	5.7"	3.7"

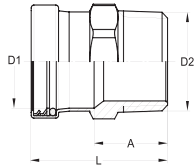


COPPER PRESS FITTINGS



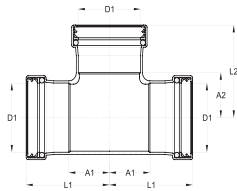
COPPER PRESS XL FEMALE ADAPTER P X FPT

ITEM	SIZE D1	SIZE D2	L1	A1
2106956	2½"	2½" FPT	3.6"	1.0"
2106957	3"	3" FPT	3.9"	1.0"
2106958	4"	4" FPT	4.4"	0.9"



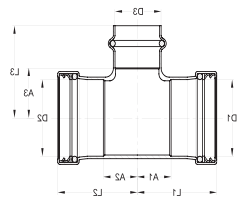
COPPER PRESS XL MALE ADAPTER P X MPT

ITEM	SIZE D1	SIZE D2	L1	A1
2106959	2½"	2½" MPT	3.8"	2.1"
2106960	3"	3" MPT	4.1"	2.2"
2106961	4"	4" MPT	4.7"	2.3"



COPPER PRESS XL EQUAL TEE P X P X P

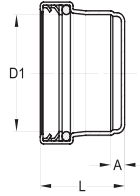
ITEM	SIZE D1	L1	A1	L2	A2
2107016	2½"	3.5"	1.8"	3.6"	1.9"
2107018	3"	4.1"	2.1"	4.2"	2.2"
2107020	4"	5.0"	2.6"	5.1"	2.7"



COPPER PRESS XL UNEQUAL TEE P X P X P

ITEM	SIZE D1	SIZE D2	SIZE D3	L1	A1	L2	A2	L3	A3
2107011	2½"	2½"	¾"	3.2"	1.5"	3.2"	1.5"	3.9"	3.0"
2107026	2½"	2½"	1"	3.2"	1.5"	3.2"	1.5"	3.8"	2.9"
2107025	2½"	2½"	1¼"	3.2"	1.5"	3.2"	1.5"	3.8"	2.7"
2107024	2½"	2½"	1½"	3.2"	1.5"	3.2"	1.5"	4.0"	2.6"
2107017	2½"	2½"	2"	3.2"	1.5"	3.2"	1.5"	3.5"	1.9"
2107013	3"	3"	¾"	3.5"	1.6"	3.5"	1.6"	4.2"	3.3"
2107010	3"	3"	1"	3.5"	1.6"	3.5"	1.6"	4.1"	3.2"
2107015	3"	3"	1¼"	3.5"	1.6"	3.5"	1.6"	4.1"	3.0"
2107023	3"	3"	1½"	3.5"	1.6"	3.5"	1.6"	4.3"	2.9"
2107019	3"	3"	2"	3.5"	1.6"	3.5"	1.6"	3.8"	2.2"
2107021	4"	4"	2"	4.0"	1.6"	4.0"	1.6"	4.2"	2.7"
2107022	4"	4"	3"	4.5"	1.7"	4.5"	2.1"	4.6"	2.7"

COPPER PRESS FITTINGS



COPPER PRESS XL CAP P

ITEM	SIZE D1	L1	A1
2107081	2½"	2.4"	0.7"
2107082	3"	2.7"	0.7"
2107083	4"	3.1"	0.7"