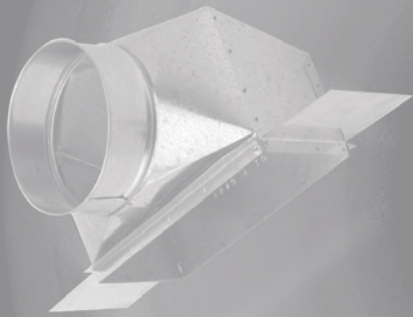


P R O D U C T

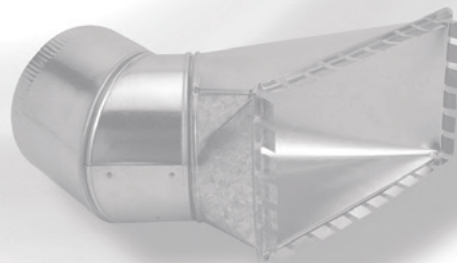
C A T A L O G

CELEBRATING OVER 100 YEARS
OF QUALITY HVAC SHEET METAL



Seal-Tite[®]
DUCT, PIPE & FITTINGS

*America's Premier
Air Distribution
Systems*



HEATING, AIRCONDITIONING & REFRIGERATION DISTRIBUTORS INTERNATIONAL



INDEX

Tapered Round Pipe 4	Air Filter Frames 9	Oval Elbows/Angles	No. 1726 – 6" Long Top Collar w/Tabs..... 17
24", 5' & 10' Sections..... 4	<i>Filter Frames</i>	No. 4130 – Horizontal Oval Elbow .. 14	No. 1732 – Damper Collar w/Scoop 17
No. 186 – 6" Pipe Hanger..... 4	No. 250 – Filter Frame w/o Dovetail .. 9	No. 4131 – Horizontal Oval Angle .. 14	Miscellaneous Accessories
15 1/4" & 19" Joist Bar..... 4	No. 251 – Filter Frame w/Dovetail – One Side..... 9	No. 4140 – Vertical Oval Elbow .. 14	No. 171 – Stub Collar..... 17
"Ball-Bearing" Elbows & Angles 4	No. 252 – Filter Frame w/Dovetail – Both Sides..... 9	No. 4141 – Vertical Oval Angle..... 14	No. 172 – Top Collar..... 17
Adjustable Elbow Four-Piece, 90°... 4	No. 254 – Premium Filter Frame..... 9	Oval Boots	No. 151 – Boot Cap w/Crimp..... 17
Adjustable Angle, Two-Piece, 45°... 4	No. 253 – Screw-In Style Filter Frame 9	No. 4244 – Round-to-Oval Boot .. 14	No. 152 – Boot Cap/No Crimp..... 17
Take-Off Fittings 5	No. 249 – Filter Frame (Premium Slide-In)..... 9	No. 4246 – Oval Reverse Boot .. 14	No. 180-1 – Round Volume .. 17
No. 1264 – Universal Take-Off .. 5	Plenum Chambers 10	No. 4246NC – Round-to-Oval Boot/No Crimp..... 14	No. 180 – Round Volume .. 17
No. V1264 – Stick-On Universal Take-Off..... 5	No. 80 – Down-Flow Plenum .. 10	No. 4248 – Oval Reverse Boot/No Crimp..... 14	No. 173 – Damper Collar..... 17
No. 1261 – Top Take-Off..... 5	No. 81 – Plenum .. 10	No. 4247 – Round-to-Oval Straight Boot..... 14	No. 175 – Damper Section .. 17
No. 1262 – Top Take-Off..... 5	No. 82 – Plenum .. 10	No. 4247NC – Round-to-Oval Straight Boot/No Crimp..... 14	No. 220 – Flue Thimble..... 17
No. 1268 – High Performance 26 GA, Top Take-Off..... 5	No. 94 – Plenum .. 10	No. 4248 – Round-to-Oval Adapter..... 14	No. 2223 – Fresh Air Intake..... 17
No. 1265-S – Take-Off Collar..... 5	No. 212 – Plenum Corners..... 10	No. 4248NC – Round-to-Oval Straight Boot/No Crimp..... 14	No. 154 – Shanty Cap..... 17
Round Take-Offs	Return Air Products 10	Duct Board Fittings 15	No. 184 – Vent Cap w/Wind Band .. 17
No. 1260-S – Take-Off Adjustable .. 5	No. 148 – Return Air Connector w/o Dovetail..... 10	<i>Take-Offs & Collars</i>	No. 222 – Storm Collar..... 17
No. 1460-S – Take-Off 1/2 Tab .. 5	No. 248 – Return Air Connector w/Dovetail..... 10	No. 1660-S – Duct Board Cone .. 15	Round Pipe Accessories 18-19
No. 1160-S – Take-Off Includes Damper..... 5	No. 81100 – Return Air Package .. 10	No. 1760-S – Duct Board Cone .. 15	No. 145 – Adjustable Perimeter Wye18
No. 1266 – Take-Off New Style..... 5	No. 92 – Low Profile Furnace .. 10	No. 1560-S – Duct Board Cone .. 15	No. 146 – Wye Branch..... 18
Register Boots 6	Wall Stack 11	No. 696 – 90° Duct Board Boot w/Straight Collar..... 15	No. 324 – Flue Wye..... 18
No. 1274 – 90° Angle Register Boot .. 6	12" & 24" Section	No. 697 – 45° Duct Board Boot w/Adjustable Collar..... 15	No. 224 – Wye Branch..... 18
No. 1270 – Straight Register Boot .. 6	Snap-Lock Wall Stack..... 11	No. 1727 – Duct Board Collar..... 15	No. 218 – Tee Joint..... 18
No. 1279 – Basement Register Boot .. 6	60" & 100" Sections Button-Lock & Sliding Edge Wall Stack..... 11	No. 1728 – Duct Board Collar w/Damper & Tabs..... 15	No. 219 – Tee Joint/No Crimp..... 18
No. 1273-L – Left End Register Boot .. 6	Stack Angles & Elbows 11	No. 1729 – Duct Board Collar w/Damper, Tabs & Scoop..... 15	No. 217 – Tee Joint/Crimp on the run 18
No. 1273 – Center End Register Boot 6	No. 1240-S – Elbow..... 11	No. 800 – Flex Duct Conductor..... 15	No. 153 – Tee Joint Cap..... 18
No. 1273-R – Right End Register Boot 6	No. 1241-S – Angle..... 11	Twist Type Take-Off Connectors for Duct Board 15	No. 123-H-V – Horizontal-Vertical .. 18
New Construction Register Boots	No. 1245-S – Angle..... 11	No. 1564 – Duct Board Seal-Tite Take-Off..... 15	No. 120 –Vertical..... 18
No. 1474 – Register Boot..... 6	No. 1246-S – Elbow..... 11	No. 502-WB-C2..... 15	No. 121 – Horizontal..... 18
No. 1374 – 90° Register Boot..... 6	No. 1259 – Left Reverse Elbow..... 11	No. 503-WB-C3..... 15	No. 1286 – Ceiling Diffuser..... 18
No. 1370 – Register Boot..... 6	No. 1253 – Center Reverse Elbow .. 11	No. 505-WB-EL..... 15	No. 84 – Rails 26" Long..... 18
No. 1373-C – Register Boot..... 6	No. 1258 – Right Reverse Elbow .. 11	No. 506-WB-D..... 15	No. 2172PG – Ceiling Register Box..... 18
Register Pans 6	No. 1200 – Take-Off Collar..... 11	No. 508-WB-DEL..... 15	No. 1075 – Ceiling Register Box .. 18
No. 1170 – Register Boot..... 6	No. 1250 – Stack Adapter..... 11	Twist Type Take-Off Connectors for Sheet Metal 16	No. 1280 – Less Damper & Chain .. 19
No. 1171 – Register Pan (6")..... 6	No. 1210 – Wall Stack Cap..... 11	No. 176 – Take-Off Collars..... 16	No. 190 – Basement Diffuser Tee .. 19
No. 1172 – Register Pan (10")..... 6	Stack Heads 12	No. 605-WG-EL..... 16	No. 191 – Diffuser Tee..... 19
No. 50 – Duct Register Box..... 6	No. 1230 – Stack Head..... 12	No. 604-WG-E..... 16	G500 Series Seal-Flex Sleeve & Accessories 19
Rectangular Duct 7	No. 1232 – Stack Head..... 12	No. 606-WG-D..... 16	G500 Series Seal-Flex Sleeve..... 19
32", 48", 60" & 96" Sections	No. 1234 – Stack Head..... 12	No. 607-WG-DE..... 16	<i>Accessories</i>
w/Button-Lock Seams, "S" Hook & Drive Cleat Connection..... 7	No. 31 – Dry Wall Frame..... 12	No. 608-WG-DEL..... 16	No. 700 – Draw Band Type Clamp.. 19
32" 48", 60" & 96" Sections	Wall Stack Boots 12	No. 601-WG-C1..... 16	No. 274 – Starter Cones..... 19
w/Slide & Drive, "S" Hook & Drive Cleat Connection..... 7	No. 1214 – Universal Boot..... 12	No. 602-WG-C2..... 16	Specialty Fittings 20
Joist Panning 7	No. 1218 – Elbow Boot..... 12	No. 603-WG-C3..... 16	Dryer Boxes..... 20
No. 207-17, 208-33 – Joist Panning .. 7	No. 1219-L – Left End Boot..... 12	No. 179 – Stick-On Take-Off Collar w/Tabs..... 16	CRD Boots..... 20
No. 182 – Volume Damper..... 7	No. 1219-R – Right End Boot..... 12	No. 181 – Stick-On Take-Off Collar w/Tabs & Damper..... 16	Black Pipe & Fittings 20
No. 185 – Duct Hanger..... 7	Oval Pipe & Fittings 13	No. 302 – Stick-on w/Damper..... 16	<i>Stove Pipe Elbows & Accessories</i>
Rectangular Duct Fittings 8	No. 4245 – Round-to-Oval Long Boot .. 13	No. 305 – Stick-on Saddle..... 16	24" Black Pipe..... 20
<i>Duct Elbows & Angles</i>	No. 4245NC – Round-to-Oval Long Boot/No Crimp..... 13	Round Pipe Accessories 17-19	Black Elbow..... 20
No. 1240 – Elbow, Short Way..... 8	No. 4113 – 113" Oval Pipe..... 13	<i>Reducers/Increasers</i>	Taper Reducer..... 20
No. 1241 – Angle, Short Way..... 8	No. 4100 – 100" Oval Pipe..... 13	No. 131 – Taper Increaser..... 17	Boot Cap..... 20
No. 1245 – Angle, Long Way..... 8	No. 4060 – 60" Oval Pipe..... 13	No. 133 – No-Crimp..... 17	No. 4248 – Round-to-Oval Adapter .. 20
No. 1246 – Elbow, Long Way..... 8	Adapters 13	No. 132 – Taper Reducer..... 17	Telescopic Pipe..... 20
<i>Duct Reducers</i>	No. 4212 – Oval Boot Adapter..... 13	No. 231 – Short Increaser..... 17	Tee Joint..... 20
No. 1251 – Reducer, 16" Long (Tapered One Side)..... 8	No. 4213 – Round-to-Oval Adapter .. 13	No. 232 – Short Reducer..... 17	Trim Collar..... 20
No. V1251 – Reducer, 8" Long (4" + 2" Reduction)..... 8	Oval Fittings 14	No. 233 – No-Crimp..... 17	Skid Sheet Steel and Heat Transfer Plates 21
<i>Duct Adapter</i>	<i>Oval Top & Side Take-Offs</i>	Connectors Draw Bands	No. XXX..... 21
No. 187 – Duct Adapter..... 8	No. 4261 – Oval Top Take-Off..... 14	No. 162 – Snap Type Pipe Connector17	No. XXX..... 21
No. V187 – Duct Adapter..... 8	No. 4265 – Oval Side Take-Off .. 14	No. 162 HC – Hose Clamp Connector17	Mobile & Modular Home Applications 21
Insulated Duct, & Fittings 8	<i>Oval Stackheads & Register Boxes</i>	No. 167 – Draw Bands Bolt Type.. 17	No. 146 – WYE..... 21
No. 215 – Rigid "S" Strip..... 8	No. 4238 – Oval Stackhead..... 14	<i>Collars</i>	No. 201 – Duct Tap-In Fitting..... 21
No. 209 – Favor-Lox "S" Hook..... 8	No. 4270 – Angle Oval Register Box 14	No. 1724 – 4" Long Top Collar..... 17	w/Damper..... 21
No. 213 – Drive Cleat..... 8	No. 4271 – Oval Register Box..... 14	Extended Plenum System 22	No. 200 – Filter Register Box..... 21
Rectangular Duct Fittings 9	<i>Oval Register Boots</i>	Reduction System 23	Table of Weights & Gauges 24
No. 1203L – Transition Take-Off..... 9	No. 4272 – Straight Oval Register Boot..... 14	Heating Values of Fuels 24	Fractions & Decimal Equivalents 24
No. 1203 – Transition Take-Off..... 9	No. 4273 – End Oval Register Boot .. 14		
No. 1230R – Transition Take-Off..... 9	No. 4274 – 90° Oval Register Boot .. 14		
No. 1210 – Duct Head..... 9			
No. 1200 – Take-Off Collar..... 9			
No. 1202 – Take-Off Collar..... 9			

SealTite[®]

CELEBRATING OVER 100 YEARS OF QUALITY HVAC SHEET METAL



FOR OVER 100 YEARS... PREMIUM QUALITY DUCT, PIPE & FITTINGS

In the Spring of 1900, the Peck-Williamson Heating Co. commissioned its sheet metal shop in downtown Cincinnati and Seal-Tite® was born.

For over 100 years the finest HVAC technicians and craftsmen have insisted on installing Seal-Tite®, prefabricated galvanized duct, pipe & fittings. These contractors, their wholesalers, and our employees have contributed greatly to the growth and success of Seal-Tite®. As we enter the new millennium and celebrate our centennial we want to thank you and invite you to continue to share in our partnership and success in the future.

For the past century Seal-Tite® has delivered value to our wholesalers, dealers/installers, home-builders, and homeowners by following basic but strong principals. These same principals guide us toward our future:

Principal 1: Our customers come first and we want our partnership to grow.

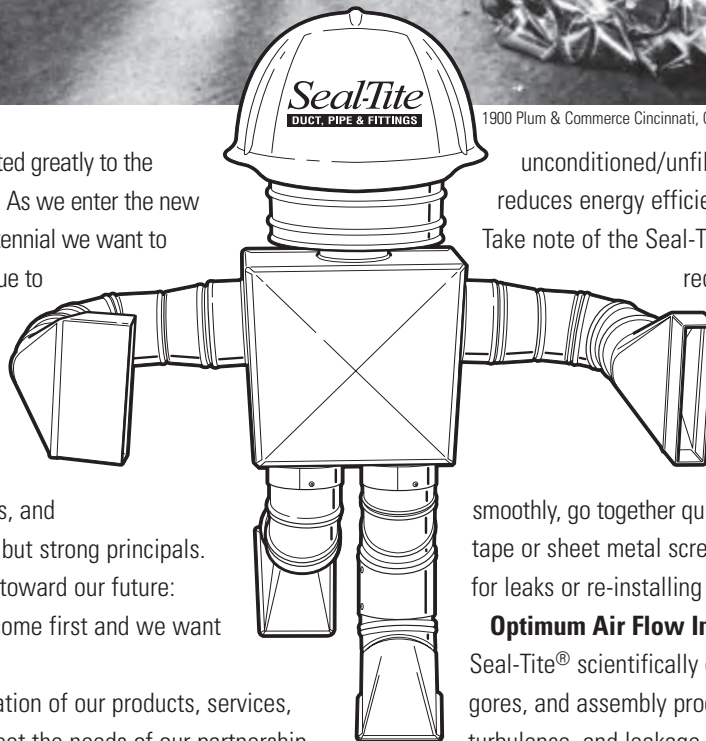
Principal 2: Constant re-creation of our products, services, programs and deliverables to meet the needs of our partnership guarantee success.

Principal 3: Continuous improvement through automation and cost-effective processes, while preserving our time tested design features and benefits will assure our future.

Principal 4: The Seal-Tite® product does make a difference and that is why we have resisted cheapening our product. We are America's Premier Air Distribution System.



1900 Plum & Commerce Cincinnati, Ohio



Seal-Tite® products will always be designed and manufactured for the *energy efficient* distribution of conditioned air while maximizing *indoor air quality* and *comfort*. Our product design adheres to three basic beliefs:

Leakage is bad.

Whether conditioned air escapes the air distribution system or unconditioned/unfiltered air is drawn in, leakage reduces energy efficiency and indoor air quality.

Take note of the Seal-Tite® design features that reduce or eliminate leakage.

Installation Time Does Matter

Seal-Tite® products are designed with the installer in mind. Products adjust smoothly, go together quickly and stay together without tape or sheet metal screws. No time is wasted looking for leaks or re-installing fittings that have come apart.

Optimum Air Flow Improves Comfort

Seal-Tite® scientifically designed collars, throat radii, gores, and assembly procedures reduce friction, turbulence, and leakage delivering optimum air flow to the Comfort Zone. 16.8% more air with 14.8% less energy does make a difference.

We invite you to review our catalog, take note of our products, their features and their benefits to you and discuss with us our partnership for the 21st century.



EASY INSTALLATION

Time is money! On the job tests show Seal-Tite saves time. No lost time wrestling with poorly constructed fittings that won't adjust or stay together. Hand hammered seams, safety edges and internally rolled gores improve safety. Each Seal-Tite fitting mates up perfectly without sheet metal screws or tape. The Seal-Tite certified installer is finished with the job quickly. If it fits right, looks right, stays right and is leak-tite – it's Seal-Tite.



ENERGY EFFICIENCY

Scientifically designed and handcrafted to reduce turbulence and friction, maximize air flow and eliminate leakage. Seal-Tite air distribution system delivers 16.8% more air volume and requires 14.8% less energy. Why install an energy efficient heating/cooling unit and lose efficiency in air distribution?



INDOOR AIR QUALITY

Seal-Tite fittings are constructed of prime grade galvanized metal to prohibit rusting and peeling and are designed to be leak-tite. Consequently, unfiltered air doesn't get in and cold or hot air doesn't get out, and unlike fabric or fibrous duct systems, won't produce dust particles or breakdown over time.



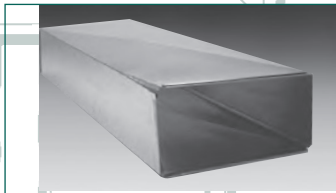
QUIET OPERATION

Full gauge metal eliminates "oil canning" noises and leak-tite construction eliminates whisper and whistling. Reduced turbulence and resistance also reduces noise throughout the air distribution system.



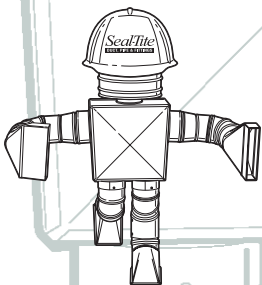
DURABLE CONSTRUCTION WITH EYE APPEAL

Seal-Tite rigid construction, full gauge metal, double lapped, hand hammered seams, streamline modern design and bright galvanized finish provides a clean, modern, finished look. Designed in accordance with A.C.C.A. Can be ordered to SMACNA specifications as well.



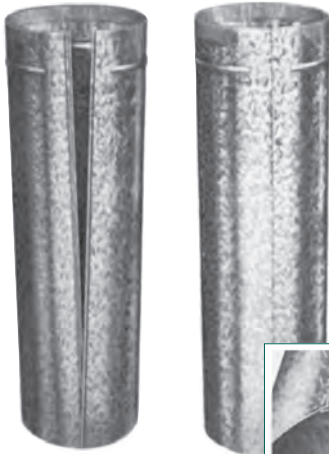
STOCKED LOCALLY & EASY HANDLING

Seal-Tite full-line products are stocked locally by our extensive wholesaler network. Get everything you need from one source of supply. Product is delivered bar-coded, color-coded, cartoned, skidded or racked for ease of handling and minimum space requirements.



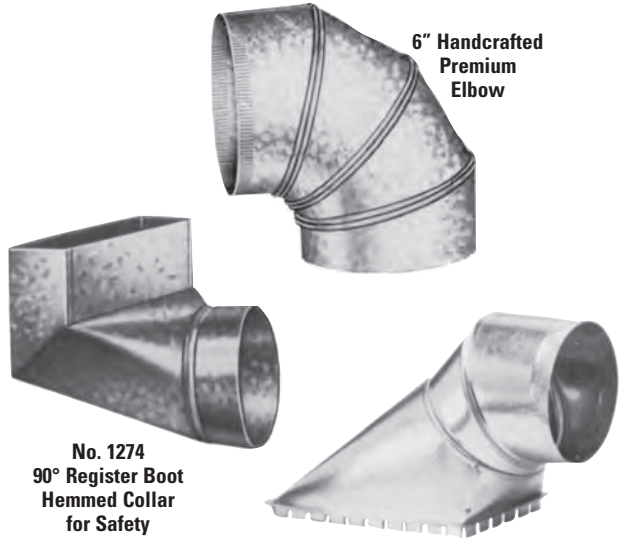
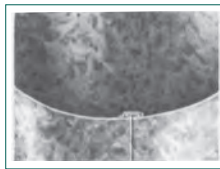
A D I F F E R E N C E !

HAVE INSISTED ON SEAL-TITE PRODUCTS BECAUSE OF THEIR DESIGN FEATURES AND THEIR BENEFITS



Seal-Tite® Snap-Lock Pipe

Seal-Tite® "snap-lock" pipe has a fine crimp, tapered end, and a 2" bearing space which provides a quick, snap-together leak-tite fit without screws or tape saving time, money and energy.



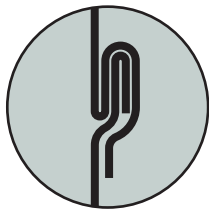
6" Handcrafted Premium Elbow

No. 1274 90° Register Boot Hemmed Collar for Safety

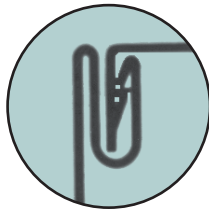
No. 1264 Adjustable Take-Off

Seal-Tite® duct, pipe and fittings use seaming and joining technology that is easy to install and take apart, yet stays together snugly producing a leak-tite, durable seam. The Seal-Tite® quality is your guarantee that it will fit right, look right, stay right and be leak-tite.

Seal-Tite elbows, take-offs, boots and fittings are designed and handcrafted for maximum air flow, minimum air loss and ease of installation. Our adjustable "ball bearing elbow" design provides smooth adjustability and a leak-tite stay together fit. The Seal-Tite exclusive design on elbows, take-off and boot collars reduces turbulence and resistance because air flows over (instead of against) the edges of the interior ridges and eliminates leak path. In addition, their full radius throats maximize air flow. 30 ga. hemmed collars on boots provide for a perfect, sturdy fit-up.



Snap-Lock



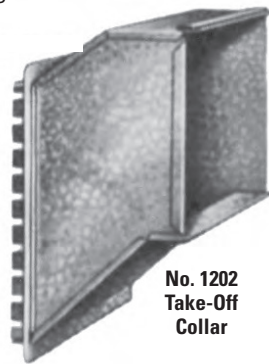
Button-Lock



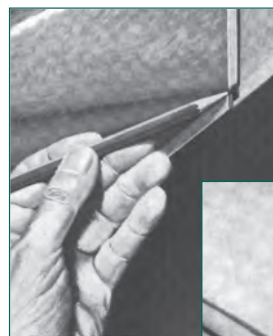
Sliding Edge



Double Lapped Hand Hammered Construction



No. 1202 Take-Off Collar



Other manufacturers corners.



Seal-Tite's fully closed corner. Eliminates leakage.

ELIMINATE LEAKS

Our handcrafted fittings have solid, fully closed corners which eliminate leak paths, reduce energy loss, and keep unfiltered unconditioned air from entering the conditioned air distribution system. In addition, our unique handcrafted double lapped, hand-hammered seaming technique provides rigid and leak-tite installation.

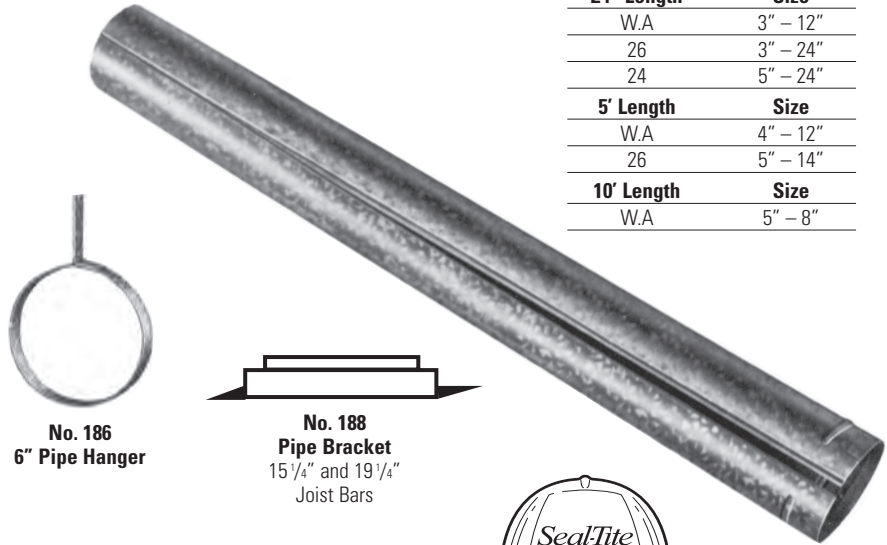
Seal-Tite®

TAPERED ROUND PIPE

24", 5' & 10'
SECTIONS



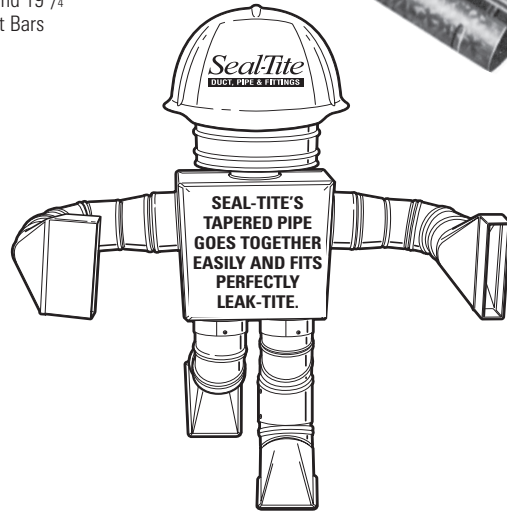
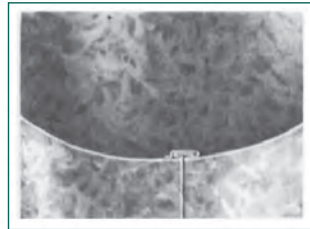
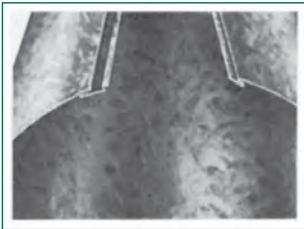
Seal-Tite® Snap-Lock Pipe



No. 186
6" Pipe Hanger

No. 188
Pipe Bracket
15 1/4" and 19 1/4"
Joist Bars

24" Length	Size
W.A	3" - 12"
26	3" - 24"
24	5" - 24"
5' Length	Size
W.A	4" - 12"
26	5" - 14"
10' Length	Size
W.A	5" - 8"



- No seaming required – “Hidden Lock” feature. Seal-Tite fit.
- Eliminates sheet metal screws and taping.
- Tapered end with fine crimp and 2" bearing space assures easy, secure fit with another section of pipe, elbow, or take-off in boot.
- One man installation saves time and money.

HAND CRAFTED “BALL-BEARING” ELBOWS & ANGLES



Adjustable Elbow
Four-Piece, 90°

Gauge	Size
W.A	3" - 12"
26	3" - 18"
24	5" - 36"



Adjustable Angle
Two-Piece, 45°

Gauge	Size
W.A	4" - 12"
26	3" - 18"
24	5" - 24"

ELBOWS & ANGLES

Minimum turbulence and friction because air flows over (instead of against) edges of interior ridges. Our hand crafted “Ball Bearing” gores are easy to adjust, leak-tite, and guaranteed not to fall apart.

***They adjust and will not fall apart or replacement is guaranteed by Seal-Tite.**

See page 20:
Black Stove Pipe & Fitting

Seal-Tite®

CELEBRATING OVER 100 YEARS OF QUALITY HVAC SHEET METAL

TAKE-OFF FITTINGS

#1264

HIGH PERFORMANCE UNIVERSAL TAKE-OFF



No. 1264
Take-Off Adjusted for
Top Installation

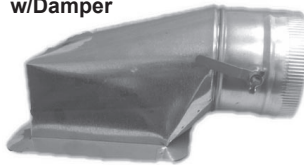


No. 1264
Take-Off Adjusted for
Side Installation



No. V1264
Universal Take-Off
V1264SO (Stick-On Style)

Stick-On
No. 1288 & 1288D
w/Damper



No. 1261
Top Take-Off



No. 1262
Top Take-Off

1261 & 1262 available
in No-Rise on 6".

No. 1268D

26 GA, COMMERCIAL HIGH-EFFICIENCY TAKE-OFF

5" – 20"

Available with Installed Damper
and Stick-On Gasket



No. 1268D
Take-Off

Seal-Tite 1264 Universal Take-Off provides proper air requirements to the branch.

1. Full 90° adjustment with ease.
2. Designed for most efficient air flow, up to 3 times more efficient.
3. Full 3/8" collar around connection to duct, for your assurance of a Seal-Tite fit. Solid corner construction.
4. Notched 5/8" dovetail for faster and easier installation, yet sturdy construction.
6. Seal-Tite No. 1264 take-off saves time, energy and maximizes comfort.

Round Pipe Size	Installed Height from Duct	Take-Off Size	AVAILABILITY			
			1261	1262	1264	V1264
4"	2"	4 1/2" x 6"	✓		✓	
4"		6" x 7"				✓
5"	2"	4 1/2" x 9"	✓	✓	✓	
5"		6" x 7"				✓
6"	1 7/8"	6" x 10"	✓	✓	✓	
6"	1 7/8"	6" x 8"			✓	
6"	1 7/8"	6 1/2" x 6 1/2"			✓	
6"	No Rise	6" x 10"	✓	✓		
6"		6" x 7"				✓
7"	7/8"	6" x 12"	✓	✓	✓	
7"		7" x 8"				✓
8"	5/8"	6" x 14"	✓	✓	✓	
8"		8" x 9"				✓
9"	5/8"	6" x 16"			✓	
10"	5/8"	7" x 16"			✓	
12"	5/8"	7" x 20"			✓	

1265	
Round Pipe Size	Take-Off Size
4"	5" x 5"
5"	5" x 5"
6"	6" x 6"
7"	7" x 7"
8"	7" x 8"
9"	7" x 10"
10"	10" x 10"
12"	12" x 12"

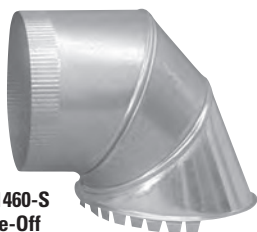


No. 1265
Take-Off Collar

ROUND TAKE-OFFS



No. 1260-S
Take-Off
Adjustable
Cone



No. 1460-S
Take-Off
1/2 Tab Cone



No. 1160-S
Take-Off Cone
Includes Damper

No. 1266
Take-Off New Style
Cone

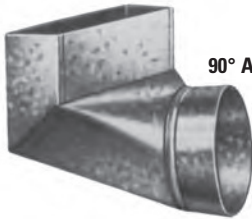


Size	AVAILABILITY			
	1260-S	1460-S	1160-S	1266
5" – 4"	✓	✓		✓
6" – 5"	✓	✓		✓
7" – 6"	✓	✓	✓	✓
8" – 7"	✓	✓		✓
9" – 8"	✓	✓		✓

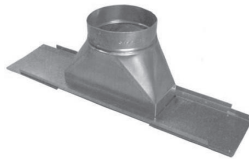
Seal-Tite®

REGISTER BOOTS

HANDCRAFTED PREMIUM BOOTS



No. 1274
90° Angle Register Boot
3 1/8" Extension



No. 1278
STR. Basement Register Boot



No. 1279
90° Basement Register Boot



No. 3516 Boot Frame
16" On Center

No. 3524 Boot Frame
24" On Center



No. 1270
Straight Register Boot



No. 1273-L
Left End Register Boot



No. 1273
Center End Register Boot



No. 1273-R
Right End Register Boot

AVAILABILITY				
Register Size	Collar Size	1274, 1374, 1370, 1373, 1270 & 1273	1279	1474
2 1/4" x 10"	4", 5" & 6"	✓		
4" x 10"	4", 5" & 6"	✓	✓	
4" x 12"	4", 5" & 6"	✓	✓	
4" x 14"	5" & 6"	✓		
2 1/4" x 12"	5" & 6"	✓		
2 1/4" x 14"	5" & 6"	✓		
4" x 12"	7" & 8"	✓		
4" x 14"	7" & 8"	✓		
2 1/4" x 12"	7" & 8"	✓		
2 1/4" x 14"	7" & 8"	✓		
6" x 10"	6"	✓	✓	
6" x 12"	6", 7" & 8"	✓	✓	
6" x 14"	8"	✓	✓	
4" x 10"	7"	✓		✓
4" x 12"	7"			✓
6" x 14"	8"	✓		

NEW CONSTRUCTION REGISTER BOOTS



No. 1474
Register Boot
4" Extension for Fire Dampers



No. 1374
90° Register Boot
2" Extension



No. 1370
Register Boot



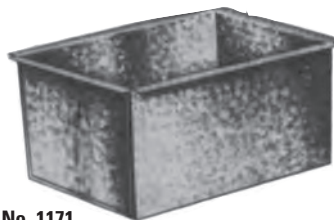
No. 1373 Register Boot
1373L- Left
1373R-Right

REGISTER PANS

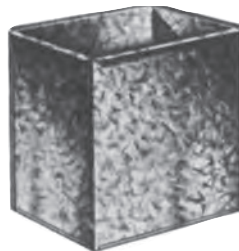


No. 1170
Register Boot
10" Deep

1170	
Register Size	Collar Size
8" x 10"	8"
8" x 12"	8"
9" x 12"	9"
10" x 12"	10"
10" x 14"	10"
12" x 14"	12"
14" x 16"	14"



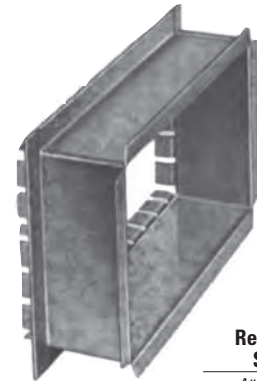
No. 1171
Register Pan
6" Deep



1171 & 1172
Register Size

- 8" x 10"
- 8" x 12"
- 9" x 12"
- 10" x 12"
- 10" x 14"
- 12" x 14"
- 14" x 16"

No. 1172
Register Pan
10" Deep



No. 50
Duct Register Box

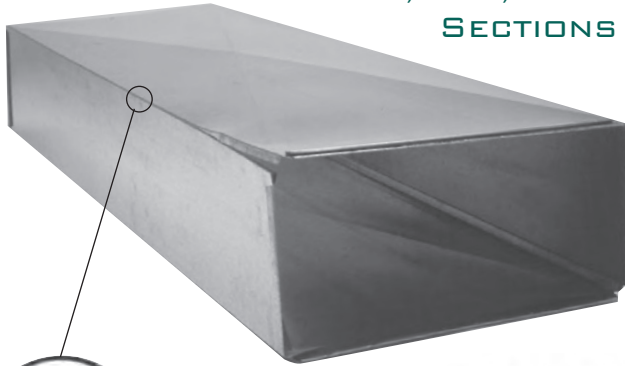
50
Register Size

- 4" x 10"
- 6" x 10"
- 4" x 12"
- 6" x 12"
- 4" x 14"
- 6" x 14"

SealTite[®]

RECTANGULAR DUCT

32", 48", 60" & 96"
SECTIONS



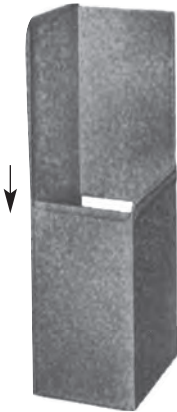
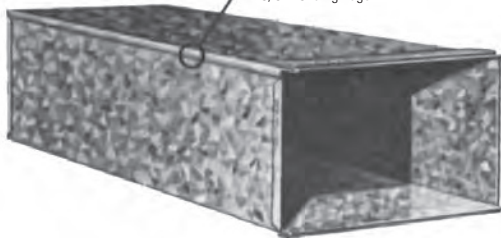
B/L - Button-Lock

With Button-Lock Seams,
"S" Hook & Drive Cleat
Connection All Included
32", 48", 60" & 96" Sections



S/O - Sliding Edge

With Slide & Drive Seams,
"S" Hook & Drive
Cleat Connection All Included
32", 48", 60"
& 96" Sections



SLIDE & DRIVE

Quickly and simply assembled on the job by inserting the seams on opposite edges and easily sliding the two pieces together and assemble with drive cleat.

Standard 26 gauge (Cross broke for rigidity and no oil can) Available in 2 styles:

- S/D = Slide & Drive (Sliding Edge w/Drive Cleat)
- B/L = Button-Lock (Snap-Lock)

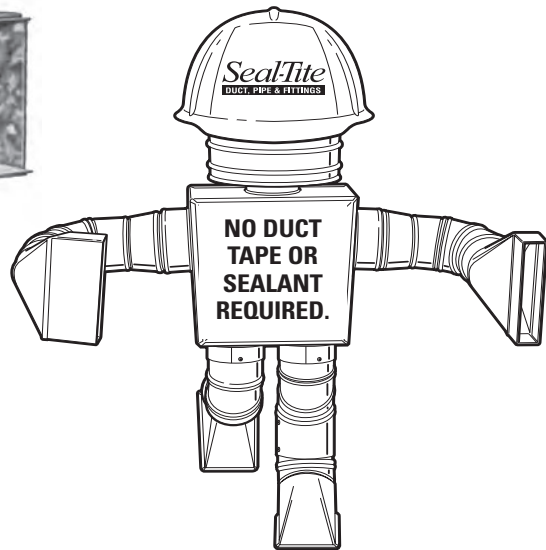
Sections sold complete w/"S" Hook and Drive Cleat.

32", 48", 60" & 96"
Size

8" x 8"
10" x 8"
12" x 8"
14" x 8"
16" x 8"
18" x 8"
20" x 8"
22" x 8"
24" x 8"
26" x 8"
28" x 8"
30" x 8"
32" x 8"
34" x 8"
36" x 8"

(Specify Type Connection)
Sold two pieces per section.
Sold in carton, skid and rack quantities.
Available in 24 & 22 gauge.
Available in Insulated and in Special Sizes & Gauges - See Price List.

10" & 12"
DEPTH DUCT
AS WELL AS
OTHER SIZES
& GAUGES



JOIST PANNING



No. 207-17
Joist Planning

207-17

35³/₈ x 16¹/₂

Single Joist on 16" Centers

207-19

35³/₈ x 19

207-24

35³/₈ x 24

208-33

35³/₈ x 33

Double Joist

Packed in cartons for convenient handling.
Available in 26 and 30 gauge.

For other sizes contact factory.

No. 182
Volume Damper



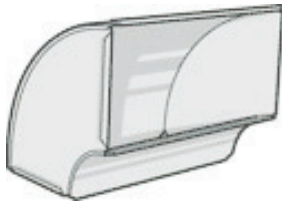
No. 185
Duct Hanger
Packed per carton

185-6
1 7/8" x 7/8"

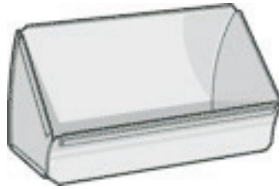
SealTite®

RECTANGULAR DUCT FITTINGS

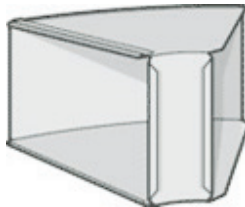
**DOUBLE LAPPED
HAND HAMMERED
SEAM CONSTRUCTION**



**No. 1240
Elbow – Short Way**



**No. 1241
Angle – Short Way**



**No. 1245
Angle – Long Way**



**No. 1246
Elbow – Long Way**

DUCT ELBOWS & ANGLES

with 4" radius throats

Note:
Also available in 10" & 12" Depths

**1240, 1241,
1245, & 1246
Size**

8" x 8"
10" x 8"
12" x 8"
14" x 8"
16" x 8"
18" x 8"
20" x 8"
22" x 8"
24" x 8"
26" x 8"
28" x 8"
30" x 8"
32" x 8"
34" x 8"
36" x 8"

Available in Insulated and in
Special Sizes & Gauges –
See Price List.

DUCT REDUCERS

4" Reduction

2" Reduction available in V1251

**1251 & V1251
Size**

12" x 8" to 8" x 8"
16" x 8" to 12" x 8"
18" x 8" to 14" x 8"
20" x 8" to 16" x 8"
24" x 8" to 20" x 8"



**No. 1251
Reducer – 16" Long
(Tapered One Side)**



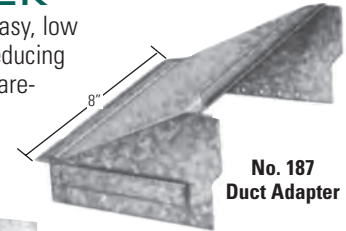
**No. 1251C
Reducer - 12" Long**

Available in Insulated and in Special Sizes & Gauges – See Price List.
S Connectors and Drive Cleats supplied with each Duct Fitting.

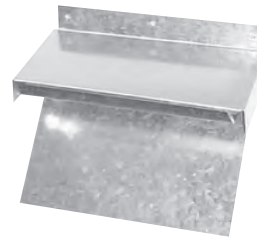
DUCT ADAPTER

Provides a fast, easy, low
cost method of reducing
duct. Saves on ware-
house space.

Available in Insulated and
in Special Sizes & Gauges –
See Price List.



**No. 187
Duct Adapter**



**No. V187
Duct Adapter**

**187 & V187
Size**

2" x 8"
4" x 8"
6" x 8"
8" x 8"
10" x 8"

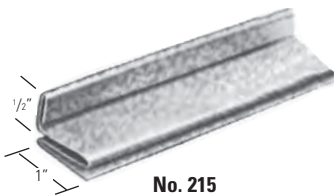
INSULATED DUCT & FITTINGS



INTERNAL INSULATION

Seal-Tite duct fittings and take-offs are
available with 1/2" internal insulation for quiet,
thermally efficient heating and cooling air
distribution systems.

Non-combustible insulation is protected by
Super-Fine Ultralite finish and is U.L. listed.
Density 2 lbs./cu. ft. K factor .24. Sizes and
prices available through factory.



**No. 215
Rigid "S" Strip
1" x 1/2"**

Designed and recommended for
use on duct wider than 22".



**No. 209
"S" Hook
36", 48", 60", 96", & 120"**

Available in
26ga or 30ga.



**No. 213
Drive Cleat**

Drive cleats are furnished in standard
lengths of **6", 8", 10", 12", 36",
60", 96", & 120"**

SealTite[®]

RECTANGULAR DUCT FITTINGS

USED WHEN DUCT IS WIDER THAN PLENUM.



No. 1203L
Transition Take-Off
2" Rise



No. 1203
Transition Take-Off
2" Rise



No. 1203R
Transition Take-Off
2" Rise

1203L, 1203 & 1203R	
Plenum Opening Width-Depth	Duct Size Width-Depth
10" x 10"	12" x 8"
10" x 12"	14" x 8"
10" x 13"	16" x 8"
10" x 14"	18" x 8"
10" x 16"	20" x 8"
10" x 17"	22" x 8"
10" x 18"	24" x 8"
14" x 15"	26" x 8"
14" x 16"	28" x 8"
14" x 18"	30" x 8"

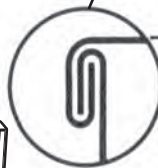
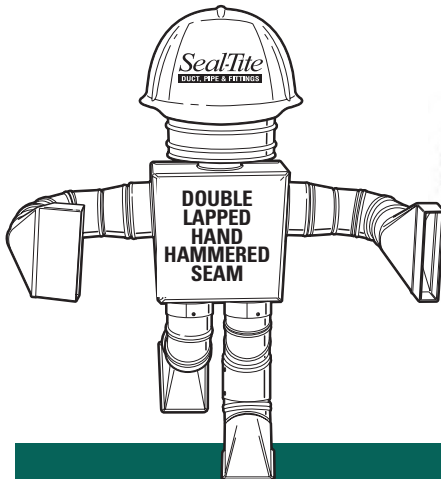
Additional sizes available on request. Carton quantity not applicable. Available in Insulated and in Special Sizes & Gauges (No. 1203L/R are non-stock items. See Price List.



No. 1210
Duct Head
(End Cap)



No. 1200
Duct Take-Off
Collar
3" Long



No. 1202
Offset Take-Off
Collar
7" Long - 2" Rise

Note: Also available in 10" & 12" Depths

Seal-Tite 1202 & 1203 Take-Off Collars are designed to give maximum air delivery.

1. Approximately 3 1/2 times more efficient than straight tap in or straight collar.
2. Two inch rise permitting space between top of plenum and floor joist above.
3. Notched dovetail cuts installation time by approximately one-third.
4. Full corners and double lapped hand-hammered seam construction minimize noise, eliminate leakage and provide excellent rigidity and durability.
5. Seal-Tite take-off completely covers tap-in hole.

1200, 1202 & 1210 Size

8" x 8"
10" x 8"
12" x 8"
14" x 8"
16" x 8"
18" x 8"
20" x 8"
22" x 8"
24" x 8"
26" x 8"
28" x 8"
30" x 8"
32" x 8"
34" x 8"
36" x 8"

Available in Insulated and in Special Sizes & Gauges - See Price List.

AIR FILTER FRAMES



No. 250 (above)
Without Dovetail
(Economy)

243-251-254 Size

14" x 20"
14" x 25"
16" x 20"
16" x 25"
20" x 25"
20" x 20"
20" x 25"

No. 251
Dove tail
One Side

No. 252
Dovetail
Both Sides

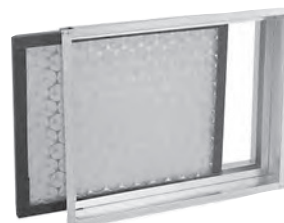


No. 243
High Efficiency
Filter Frame
w/Hinged Door
Accepts 1" - 4"
Filters
Frame is 7" Wide

No. 254
Premium 1" Filter
Frame w/Hinged Door
Frame is 3" Wide



No. 253
Screw-In Style Filter Frame
(Screws into Side of Plenum)



No. 249
Filter Frame
(Premium Slide-In)

249 Size

16 1/8" x 20 1/8"
20 1/8" x 20 1/8"
16 1/8" x 25 1/8"
20 1/8" x 25 1/8"
14 1/8" x 20 1/8"
14 1/8" x 25 1/8"

Seal-Tite®

PLENUM CHAMBERS

**INDIVIDUALLY
CARTONED,
SHIPPED K.D.**



**No. 80
Down-Flow Plenum**
Sliding edge seam with
flanged construction.



Sliding Edge



No. 81 Plenum
Made to fit flange dimensions on
unit with "S" hooks inside. Sliding
edge seam construction.



No. 82 Plenum
"ADJUSTABLE",
can be trimmed down to
fit flange on unit.



Adjustable
Male Edge



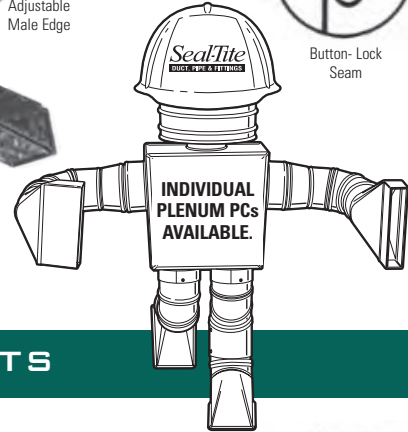
**No. 212
Plenum Corners**
Priced per 60" lengths



No. 94 Plenum
Button-Lock Seam
and Set-In Cap



Button-Lock
Seam



RETURN AIR PRODUCTS

No. 248

RETURN AIR DROP CONNECTORS

Casing Opening	Duct Size
18" x 18"	12" x 8" to 16" x 8"
18" x 18"	14" x 8" to 18" x 8"
18½" x 18½"	14" x 8" to 18" x 8"
18" x 19"	14" x 8" to 18" x 8"
18" x 20"	14" x 8" to 22" x 8"
20" x 12"	14" x 8" to 18" x 8"
20" x 12"	16" x 8" to 20" x 8"
*20" x 14"	20" x 8" to 24" x 8"
23" x 14"	16" x 8" to 22" x 8"
24" x 14"	24" x 8" to 28" x 8"
26" x 14"	18" x 8" to 24" x 8"
26" x 16"	18" x 8" to 24" x 8"
28" x 16"	20" x 8" to 26" x 8"
30" x 18"	24" x 8" to 30" x 8"

Top filter opening standard.
*Add "S" for side filter access.
*Add "F" for filter included.

Available in
Multiple Sizes

No. 248F
Return Air Connector
w/Dovetail
(shown as 248SF
20" x 14" to 20" x 8")

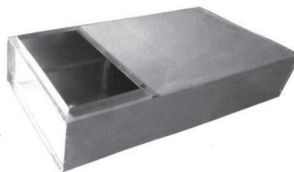


No. 055
Angled Return Air Boot (Larger Tonnage)
Accepts 1"-5" Filter

Boots Available In
Multiple Sizes



No. WK
Support Box
WK 30 & 38



*No. WKF
With Side
Filter Rack

No. 81100

RETURN AIR PACKAGE

Complete package consisting of:
1 – 1200 Starting Collar
2 – 32" Duct Sections B/L
1 – 248 Connector with Filter
6 – 213 Drive Straps
Shipped K.D.

Duct Size	Collar (Filter Size)
*20" x 10"	20" x 14"
*20" x 10"	20" x 16"
*25" x 10"	23" x 14"
*25" x 10"	25" x 14"
*25" x 10"	25" x 16"

Top filter opening standard.
*Add "S" for side filter access.
*Add "F" for filter included.



No. 81100
Return Air
Package

No. 81100SF
Side Filter
Return Air
Package

No. 92

LOW PROFILE FURNACE RETURN SUPPORT BOX

Return Air Boxes manufactured from 22 and 24 ga. galvanized steel. Bottom panel constructed from 24 ga. material. Sides from 22 ga. material. Set in tops and bottoms ordered ¼" larger than bottom of unit. Shipped K.D.

No. 92
Low Profile
Furnace
Return Air
Support
Box



Available in a variety of sizes.

SealTite®

WALL STACK

SNAP-LOCK WALL STACK

One Piece 12" & 24" Sections
Available only in Snap-Lock.
Other sizes available as
factory specials.



12" Section

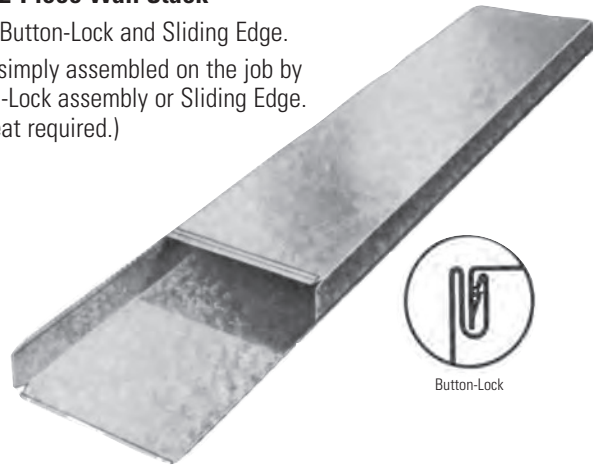
24" Section

60" & 100" 2-Piece Wall Stack

Available in Button-Lock and Sliding Edge.
Quickly and simply assembled on the job by
using Button-Lock assembly or Sliding Edge.
(No drive cleat required.)

6"-100" Dimensions

- 2 1/4" x 10"
- 2 1/4" x 12"
- 2 1/4" x 14"
- 3 1/4" x 10"
- 3 1/4" x 12"
- 3 1/4" x 14"



Button-Lock

STACK ANGLES & ELBOWS



No. 1240-S
Elbow



No. 1241-S
Angle



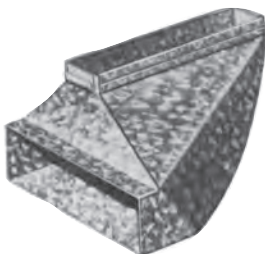
No. 1245-S
Angle



No. 1246-S
Elbow

Stack Angle Dimensions

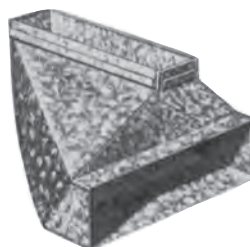
- 2 1/4" x 10"
- 2 1/4" x 12"
- 2 1/4" x 14"
- 3 1/4" x 10"
- 3 1/4" x 12"
- 3 1/4" x 14"



No. 1259
Left Reverse Elbow
(5 3/4)"*



No. 1253
Center Reverse Elbow
(5 3/4)"*

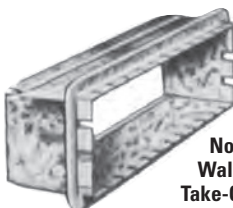


No. 1258
Right Reverse Elbow
(5 3/4)"*

AVAILABILITY

Dimensions	1210 & 1200	1250	1259, 1253 & 1258
2 1/4" x 10"	✓	✓	✓
2 1/4" x 12"	✓		
2 1/4" x 14"	✓		
3 1/4" x 10"	✓	✓	✓
3 1/4" x 12"	✓	✓	✓
3 1/4" x 14"	✓		✓

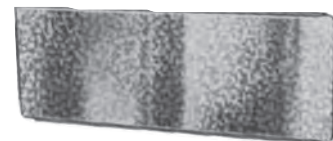
PLEASE SPECIFY PART NUMBER WHEN ORDERING.
*Overall Depth - Deduct 1" for Installed Depth.



No. 1200
Wall Stack
Take-Off Collar



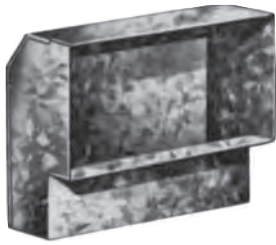
No. 1250
Stack Adapter
3 1/4" x 10" to 2 1/4" x 12"
3 1/4" x 12" to 2 1/4" x 14"



No. 1210
Wall Stack Cap

Seal-Tite[®]

STACK HEADS



**No. 1230
Stack Head**
3" Throat, 2" Flange



**No. 1230LE
Stack Head with Plate**

AVAILABILITY

Stack Dimension	Register Size	AVAILABILITY	
		1230	1230LE
2 1/4" x 10"	6" x 10"	✓	✓
2 1/4" x 12"	6" x 12"	✓	✓
2 1/4" x 14"	6" x 14"	✓	✓
3 1/4" x 10"	4" x 10"	✓	✓
3 1/4" x 10"	6" x 10"	✓	✓
3 1/4" x 12"	4" x 12"	✓	✓
3 1/4" x 12"	6" x 12"	✓	✓
3 1/4" x 14"	4" x 14"	✓	✓
3 1/4" x 14"	6" x 14"	✓	✓



**No. 1232
Double Stack Head**
3" Throat



**No. 1234
Stack Head**
7 1/4" Deep

1232 & 1234

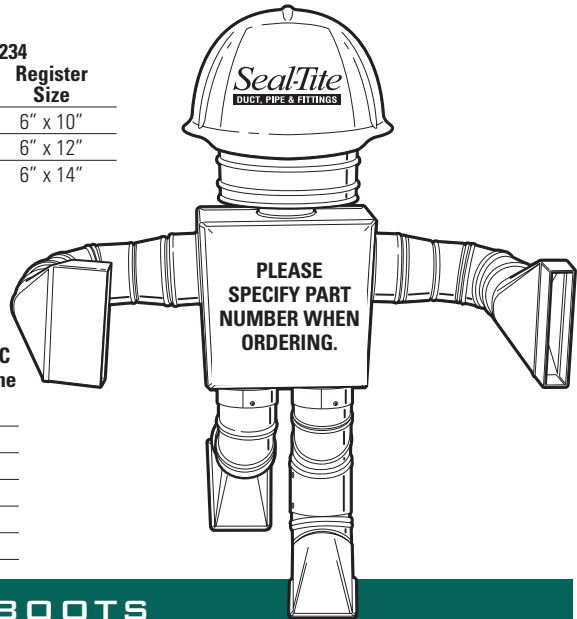
Stack Dimension	Register Size
3 1/4" x 10"	6" x 10"
3 1/4" x 12"	6" x 12"
3 1/4" x 14"	6" x 14"

**No. 3517
Cold Air Frame**
16" On Center



No. 31 & 31HC Dry Wall Frame

6" x 8"
6" x 10"
6" x 12"
6" x 14"
6" x 24"
6" x 30"



WALL STACK BOOTS



**No. 1214
Universal Boot**



**No. 1218
Elbow Boot**
90°



**No. 1219-L
Left End Boot**



**No. 1219
Center End Boot**



**No. 1219-R
Right End Boot**

1214, 1218 & 1219

Stack Dimension	Collar Size
2 1/4" x 10"	5" & 6"
2 1/4" x 12"	5" & 6"
2 1/4" x 14"	6"
3 1/4" x 8"	5" & 6"
3 1/4" x 10"	4", 5" & 6"
3 1/4" x 10"	7"
3 1/4" x 10"	8"
3 1/4" x 12"	6"
3 1/4" x 12"	7" & 8"
3 1/4" x 14"	6" & 7"
3 1/4" x 14"	8"

SealTite®

CELEBRATING OVER 100 YEARS OF QUALITY HVAC SHEET METAL

OVAL PIPE & FITTINGS



No. 4245
Round-to-Oval
Angle Boot

No. 4245NC
No Crimp

4245 Size
6" - 6"
7" - 7"
8" - 8"



No. 4100 + 4113
Oval Pipe
100" Length + 113"
6", 7", 8"

Also Available in Rack Quantities

No. 4060
Oval Pipe
60" Length
6", 7", 8"

For other sizes contact factory.

ADAPTERS... EXCLUSIVELY FROM SEAL-TITE



No. 4212
Oval Boot Adapter
6" & 7" Oval

4212 Dimensions
2 1/4" x 10"
2 1/4" x 12"
2 1/4" x 14"
3 1/4" x 8"
3 1/4" x 10"
3 1/4" x 12"
3 1/4" x 14"

CONVERTS WALL
STACK BOOTS
TO OVAL

No. 4213
Straight
Round-to-Oval Adapter

4213 Size
7" - 7"
6" - 6"
7" - 6"



No. 1218
Elbow Boot
with No. 4212 Adapter

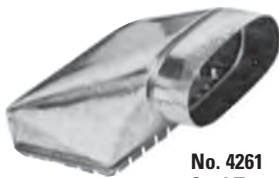


No. 1264
Universal Branch Take-Off
with No. 4213 Adapter

Seal-Tite

OVAL FITTINGS

OVAL TOP & SIDE TAKE-OFFS



No. 4261
Oval Top
Take-Off

**4261
Size**
6" x 10" - 6"
6" x 12" - 7"



No. 4265
Oval Side
Take-Off

**4265
Size**
6" x 6" - 6"
7" x 7" - 7"

OVAL STACKHEADS & REGISTER BOXES

6", 7", 8" Oval



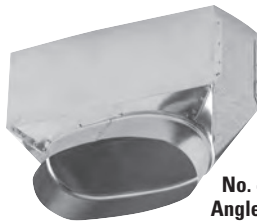
No. 4238
Oval Stackhead
2 3/4" Depth
3 3/4" Depth

Available with 9" long collar

**4238
Dimensions**
4" x 10"
4" x 12"
6" x 10"
6" x 12"

**4270
Dimensions**
2 1/4" x 12"
4" x 10"

**4271
Dimensions**
2 1/4" x 12"
4" x 10"
4" x 12"



No. 4270
Angle Oval
Register Box



No. 4271
Oval Register Box



No. 4235
Square Oval
Stackhead
3 1/4" Depth

No. 4236
Square Oval
Stackhead
W, Top outlet
3 1/4" Depth



OVAL REGISTER

BOOTS

6", 7", 8" Oval

No. 4272
Straight Oval
Register Boot



No. 4273
End Oval
Register Boot



No. 4274
Oval 90° Register Boot



**4272, 4273 &
4274
Dimensions**
2 1/4" x 10"
2 1/4" x 12"
2 1/4" x 14"
4" x 10"
4" x 12"

OVAL BOOTS

6", 7", 8" Oval

No. 4244
Round-to-Oval Boot



No. 4244NC
Round-to-Oval Boot
w/No Crimp

No. 4246
Oval Reverse
Boot



No. 4246NC
No Crimp

No. 4247
Round-to-Oval
End Boot



No. 4247NC
No Crimp

No. 4248
Offset
Round-to-Oval
Adapter



No. 4248NC
No Crimp

OVAL ELBOWS/ANGLES

6", 7", 8"



No. 4140
Vertical Oval Elbow



No. 4141
Vertical Oval Angle



No. 4130
Horizontal Oval Elbow



No. 4131
Horizontal Oval Angle

SealTite®

CELEBRATING OVER 100 YEARS OF QUALITY HVAC SHEET METAL

DUCT BOARD FITTINGS

TAKE-OFFS & COLLARS

No. 1660-S
Duct Board Cone
w/ 4 1/2" SE Segment &
Tabs

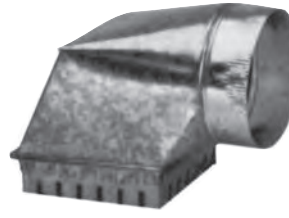
1660-S, 1560-S & 1760-S
Size

5" - 4"
6" - 5"
7" - 6"
8" - 7"
9" - 8"



No. 1760-S
Duct Board Cone
w/ 4 1/2" SE Segment,
Damper & Tabs

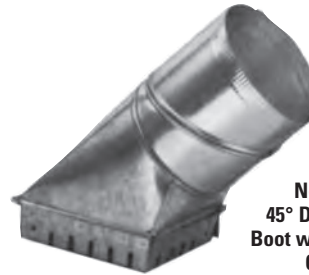
Flex Retention
Tabs



No. 696U
90° Duct Board
Boot w/Straight
Collar

696U, 697U & 698U	
Take-Off Opening	Collar Size
6" x 7"	4"
6" x 7"	5"
6" x 7"	6"
6" x 7"	7"
6" x 7"	8"
6" x 8"	4"
6" x 8"	5"
6" x 8"	6"
6" x 8"	7"
6" x 8"	8"

No. 1560-S
Duct Board
Cone



No. 697U
45° Duct Board
Boot w/Adjustable
Collar

1727, 1728 & 1729
Size

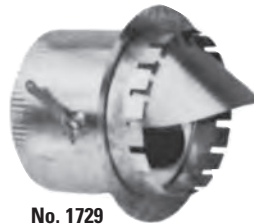
4"
5"
6"
7"
8"
9"
10"
12"
14"
16"

No. 1728
Duct Board
Collar w/
Damper & Tabs



No. 1727 1" - 1 1/2"
Duct Board
Collar

No. 1727-2"
For 2" DB



No. 1729
Duct Board Collar w/
Damper, Tabs & Scoop



No. 800
Flex Duct
Conductor
4" - 16"

TWIST TYPE TAKE-OFF CONNECTORS FOR DUCT BOARD

SEAL-TITE RECOMMENDED
FITTING FOR EFFICIENT AIR
DELIVERY

No. 1564
Duct Board
Seal-Tite® Take-Off



1564
Size

4 1/2" x 9" - 5"
6" x 10" - 6"
6" x 12" - 7"
6" x 14" - 8"

502, 503, 505, 506 & 508
Size

5"
6"
7"
8"
9"
10"
12"
14"
16"



No. 502-WB-C2



No. 503-WB-C3



No. 505-WB-EL



No. 506-WB-D



No. 508-WB-DEL

Seal-Tite®

CELEBRATING OVER 100 YEARS OF QUALITY HVAC SHEET METAL

TWIST TYPE TAKE-OFF CONNECTORS FOR SHEET METAL

176, 605, 604,
606, 607, 608,
601, 602, 603,
301, 302, 303,
304, 305, 306,
315, 325 & 335

Size

4"

5"

6"

7"

8"

9"

10"

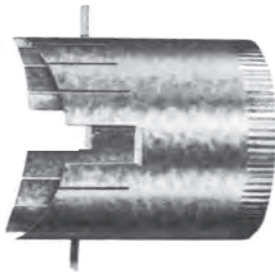
12"

14"

16"

18"

20"



**No. 176
Take-Off Collars**
For Insulated Rigid Round Pipe.
(Specify Round Run Dimension.)



No. 605-WG-EL



No. 604-WG-E



No. 606-WG-D



No. 607-WG-DE



No. 608-WG-DEL



No. 601-WG-C1



No. 602-WG-C2



No. 603-WG-C3



**No. 179
Stick-On Take-Off Collar
w/Tabs**

**179 & 181
Size**
5" - 8"



**No. 181
Stick-On Take-Off Collar
w/Tabs & Damper**



**No. 302
Stick-On w/Damper**

**No. 301
Stick-On Take Off**

**No. 303
Stick-On w/Scoop**

**No. 304
Stick-On w/Scoop &
Damper**

**No. 306
Stick-On Elbow**



**No. 305
Stick-On Saddle**

**No. 315
Stick-On Saddle w/Damper**

**No. 325
Stick-On Saddle w/Scoop**

**No. 335
Stick-On Saddle w/Scoop & Damper**

SealTite®

ROUND PIPE ACCESSORIES

REDUCERS/INCREASERS



No. 131
Taper Increaser

Specify
No. 133
for
No Crimp

26 GA.
8" Long

4-3 and 5-4 6 1/2" Long.



No. 132
Taper Reducer



No. 231
Short Increaser

Specify No. 233
for No Crimp

26 GA.



No. 232
Short Reducer



No. 171
Stub Collar
(No Crimp)



No. 172
Top Collar
(Crimp)

271/272 Collars with 1/8" lip

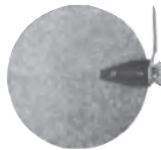


No. 1716
6" Long Top
Collar

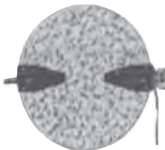


No. 151
Boot Cap w/Crimp
(shown)

No. 152
Boot Cap/
No Crimp



No. 180-1
Single Quad
Damper Complete
w/Bearings



No. 180
Double Quad
Damper



No. 173
Damper Collar



No. 174
Balancing
Damper



No. 175
Damper Section
7" Long



No. 1726
6" Long Top
Collar w/Tabs, Crimp & Bead



No. 220
Flue Thimble
4" - 12"



No. 2223
Fresh Air Intake
(screened)
4" - 12"

No. 2223D
With
Damper

*Recommended for
Dryer Vent



No. 154
Shanty Cap
3" - 16"

No. 184
Vent Cap w/
Wind Band
3" - 12"

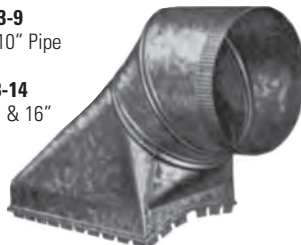


1463-9 & 1463-14
Size

4 1/2" x 9" - 5"
6" x 10" - 6"
6" x 12" - 7"
6" x 14" - 8"
6" x 16" - 9"
7" x 16" - 10"

No. 1463-9
Fits 8", 9" & 10" Pipe

No. 1463-14
Fits 12", 14" & 16"
Pipe



SealTite®

CONNECTORS DRAW BANDS



No. 162
Snap Type Pipe
Connector
4" - 8"

No. 167
Draw Band
Bolt Type
26 GA.
4" - 16"



No. 162 HC
Hose Clamp
Connector
4" - 8"

COLLARS

No. 1724
4" Long Top
Collar with
Crimp & Bead



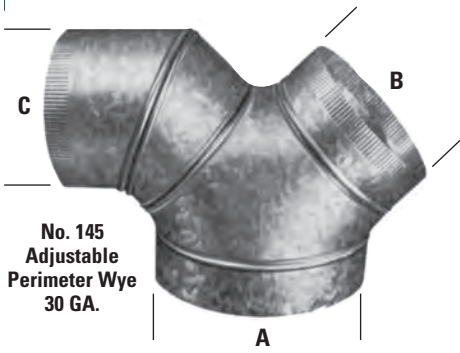
**1716, 1724,
1726 & 1732**
Size

3" - 18"



No. 1732
Damper Collar
w/Scoop

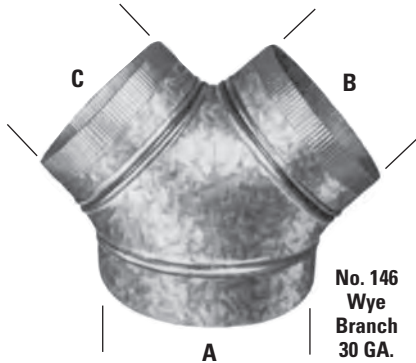
ROUND PIPE ACCESSORIES



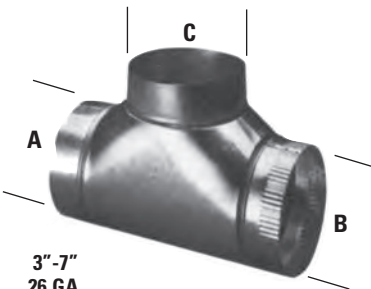
**No. 145
Adjustable
Perimeter Wye
30 GA.**

**145 & 146
Sizes for
A x B x C**

6" x 5" x 5"
7" x 5" x 5"
7" x 6" x 5"
7" x 7" x 5"
8" x 6" x 6"
8" x 7" x 5"
9" x 7" x 7"
9" x 8" x 6"
10" x 7" x 7"
10" x 7" x 6"
10" x 8" x 8"
12" x 10" x 10"



**No. 146
Wye
Branch
30 GA.**



**3"-7"
26 GA.**

**8"+ up
24 GA.**

No. 217
(Crimp on the run)
No. 218
Tee Joint
(Crimp)
No. 219
(No Crimp)



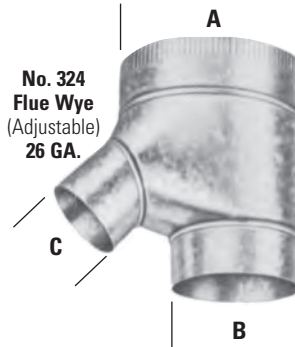
**217, 218 & 219
Sizes for
A x B x C**

3" x 3" x 3"
4" x 4" x 4"
5" x 5" x 5"
6" x 6" x 6"
7" x 7" x 7"
8" x 8" x 8"
9" x 9" x 9"
10" x 10" x 10"
12" x 12" x 12"
14" x 14" x 14"

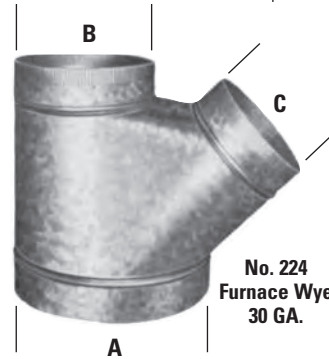
**No. 153
Tee Joint Cap
3"-12"**

**224
Sizes for
A x B x C**

Sizes for A x B x C	Length
8" x 6" x 6"	11"
9" x 7" x 7"	13"
10" x 8" x 8"	14"
12" x 10" x 7"	13"
12" x 10" x 8"	14"
12" x 10" x 10"	16"
12" x 12" x 8"	14"
14" x 9" x 9"	15"
14" x 10" x 10"	16"
14" x 12" x 8"	14"
14" x 12" x 12"	18"
16" x 12" x 8"	14"
16" x 12" x 9"	15"
16" x 12" x 10"	16"
16" x 12" x 12"	16"



**No. 324
Flue Wye
(Adjustable)
26 GA.**



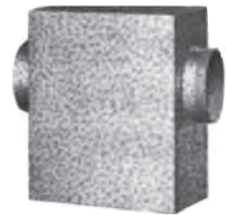
**No. 224
Furnace Wye
30 GA.**

**324
Sizes for
A x B x C**

5" x 4" x 3"
5" x 5" x 3"
6" x 4" x 3"
6" x 5" x 3"
6" x 6" x 3"
7" x 5" x 3"
7" x 6" x 3"
6" x 4" x 4"
6" x 5" x 4"
6" x 6" x 6"
7" x 6" x 4"

Non AGA Approved Draft Diverters

**No. 123-H-V
Horizontal-Vertical**



**No. 121
Horizontal**



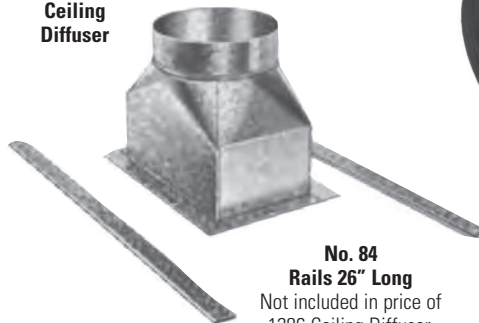
**No. 120
Vertical**

**120, 121 & 123
Size
3" - 8"**

1286

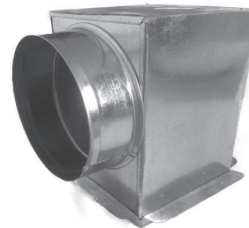
Register Size	Pipe Size
4" x 8"	5"
4" x 8"	6"
4" x 10"	5"
4" x 10"	6"
6" x 6"	6"
6" x 10"	6"
6" x 12"	6"
6" x 12"	7"
6" x 14"	8"
8" x 8"	8"
8" x 10"	8"
8" x 12"	8"
12" x 12"	9"

**No. 1286
Ceiling
Diffuser**



**No. 84
Rails 26" Long**
Not included in price of
1286 Ceiling Diffuser.

**No. 2172PG
Ceiling Register
Box**



**2172PG & 1075
Size**

6" x 6" - 6"
8" x 8" - 6"
8" x 8" - 7"
8" x 8" - 8"
10" x 10" - 8"

Also Available Insulated:
No. 3172 (Side)
No. 3172B (Top)

**No. 1075
Ceiling Register
Box**



SealTite®

CELEBRATING OVER 100 YEARS OF QUALITY HVAC SHEET METAL

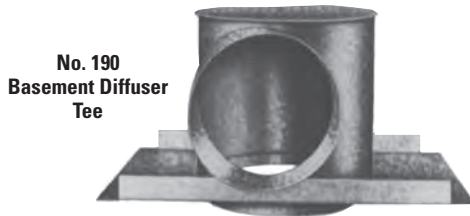
ROUND PIPE ACCESSORIES



**No. 1280
Ceiling Box
Less Damper
& Chain**



**No. 191
Diffuser Tee**



**No. 190
Basement Diffuser
Tee**

Pipe Size	AVAILABILITY		
	1280	190	191
6" - 6"	✓	✓	✓
6" - 8"	✓	✓	✓
7" - 8"	✓	✓	✓
8" - 8"	✓	✓	✓
7" - 10"		✓	✓
8" - 10"	✓	✓	✓
8" - 12"			✓

⁵/₁₆" Plaster Ground supplied on Ceiling Diffusers.
Can be supplied with ³/₁₆" if specified.

G500 SERIES SEAL-FLEX SLEEVE & ACCESSORIES

Seal-Tite Seal-Flex Sleeve insulates galvanized pipe and provides more air delivery than "flex" pipe.
(8" - Galvanized vs. Flex, approximately 35% more efficient)
Available in 4" - 18" sizes.

Description/Applications

Seal-Flex Sleeve G500 is a U.L. listed insulation for round metal pipe. The scuff resistant grey polyethylene jacket provides an exterior vapor barrier and the 1" fiberglass insulation combines to provide fast economical jobsite installation. Just slip seal-flex sleeve over the galvanized pipe.

G500 has a composite U.L. fire hazard classification of less than 25 flame spread and 50 smoke developed, and has a Pipe and Equipment Covering listing.

Performance Features/Benefits

- U.L. Listed Pipe and Equipment Covering. Less than 25 flame spread, 50 smoke developed.
- Standard 1" thick fiberglass insulation.
"K" .28 BTU/hr./sf. at 75° mean
"R" 3.75
- Extra thickness of fiberglass insulation available on request.
"C" .187 BTU/hr./sf. at 75° mean
"R" 5.357
- Scuff resistant grey polyethylene vapor barrier. Jacket Water Vapor Transmission Rating .10 perms.
- Full range of sheet metal diameters available. (4" - 18" sizes)
- Eliminates need for handling and fabricating bulky duct wrap, for round pipe on jobsite.
- Easy diameter identification. Each piece is marked with size on closure tape.
- Packaged efficiently for easy warehousing, shipping and jobsite handling.
- Starter cone No. 274 makes sliding Seal-Flex sleeve over pipe a snap. Draw band clamp No. 700 assures sleeve stays in place.



ACCESSORIES



**No. 700
Draw Band Type
Clamp**



**No. 274
Starter Cones**

Permanent Galvanize Metal for durability and ease of assembly. Just fit on end of pipe & slide Seal-Flex over the top.

Seal-Tite®

SPECIALTY PRODUCT

DRYER BOX



Model 350
22 GAUGE ALUMINIZED STEEL
 4.03 POUNDS EACH
 21" H X 12 1/2" W X 4 3/8" D
 9 1/2" X 18 1/4" I



Model 425
22 GAUGE ALUMINIZED STEEL
 4.14 POUNDS EACH
 21" H X 12 1/2" W X 5 1/8" D
 9 1/2" X 18 1/4" I

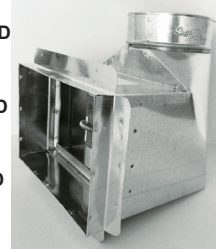
- 22 gauge aluminized steel weighing 4.03 pounds each
 - Top port measures 4 15/16" x 3 5/32" oval shape
 - Distance from nailing flange to rear of box is 3 1/2"
 - Overall measurements: 21" h x 12 1/2" w x 4 3/8" deep
 - Inside measures 9 1/2" wide x 18 1/4" tall
- 22 gauge aluminized steel weighing 4.14 pounds each
 - Top port measures 4 1/8" with very slight oval shape
 - Distance from nailing flange to rear of box is 4 1/4"
 - Overall measurements: 21" h x 12 1/2" w x 5 1/8" deep
 - Inside measures 9 1/2" wide x 18 1/4" tall

CRD BOOTS

No. 1470 D
Str. Bt.

No. 1473 D
End Bt.

NO. 1474 D
90° Bt.



- Available Boot Styles: 90° or "L" Boot, Straight Boot, and End Boot
- 26 Ga Boot Standard Fusible Link - 165° F (Optional 212° F)
- 22 Ga CRD Frame And Blades
- Available In Range Of Sizes From 4" x 6" x 4" to 14" x 14" x 10"

BLACK PIPE & FITTINGS

STOVE PIPE ELBOWS & ACCESSORIES



24" Black Pipe
 5" - 8"



Black Elbow
 5" - 8"

Taper Reducer
 6" - 5"
 7" - 6"
 8" - 6"
 8" - 7"



Boot Cap
 5" - 8"

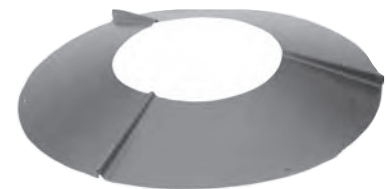
No. 4248
Round-to-Oval
Adapter
 6" - 6"
 7" - 6"
 7" - 7"



Tee Joint
 5" x 5" x 5"
 6" x 6" x 6"
 7" x 7" x 7"
 8" x 8" x 8"

See No. 217, 218
 & 219 for style.

Telescopic Pipe
 5" - 8"

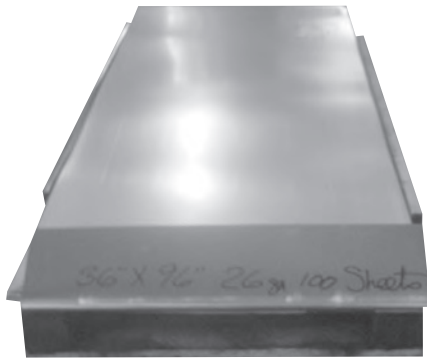


Trim Collar
 5" - 8"

SealTite®

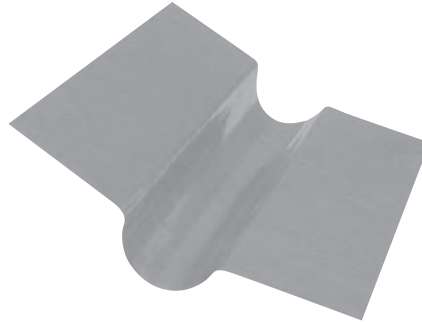
SKID SHEET STEEL

HEAT TRANSFER PLATES



36" X 96" 28 GA., 26 GA.
Packed 100 per skid

48" X 120" 28 GA., 26 GA.
Packed 50 per skid



For Installing Tubing to Sub Floor
For Radiant Floor Heating

No. 336
36" Long

No. 348
48" Long

36" or 48" Length
Install with Zip Screws
50 Pieces per Bundle

MOBILE & MODULAR HOME APPLICATIONS



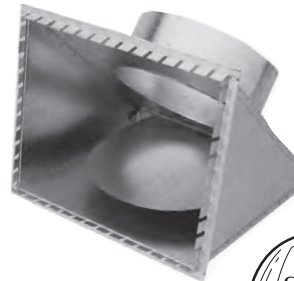
No. 146 – WYE

No. 146
WYE
Size

14" – 12" x 12"
12" – 10" x 10"
12" – 12" x 12"

All fittings available individually.
Call Customer Service for pricing.

No. 201
Duct Tap-In Fitting
w/Damper



No. 201
Duct Tap-In Fitting w/Damper

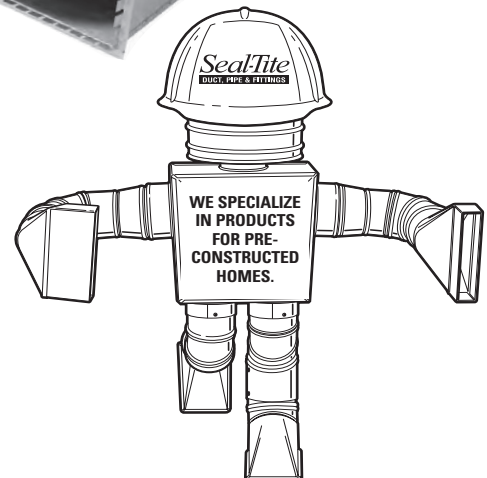
Opening Size	Depth Size	Collar Size
11" x 12"	14"	10"
14" x 12"	14"	10" & 12"
15" x 14"	14"	14"



No. 200
Filter Register
Box

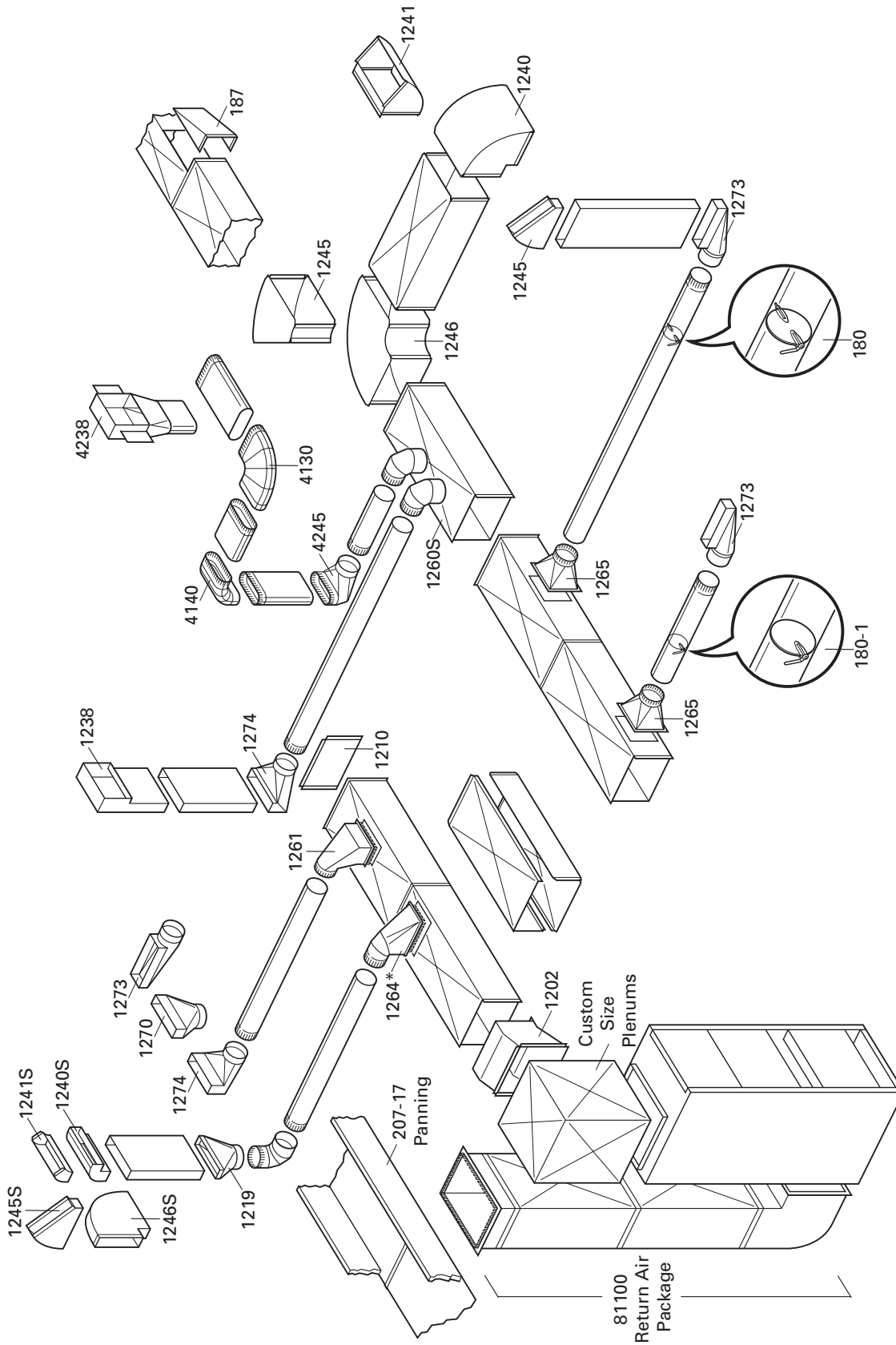
No. 200
Filter/Register Box

Box Size	Collar Size
20" x 12" x 14"	12"
20" x 14" x 14"	14"
14" x 14" x 12"	12"



SealTite[®]

EXTENDED PLENUM SYSTEM



*30 EQ. FT. For 1264 Used as Top Take-Off
 20 EQ. FT. For 1264 Used as Side Take-Off

Seal-Tite duct, pipe, & fittings are designed for optimum air flow throughout the comfort zone.



FRACTIONS & DECIMAL EQUIVALENTS

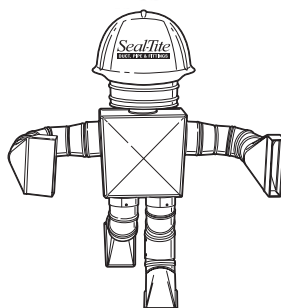
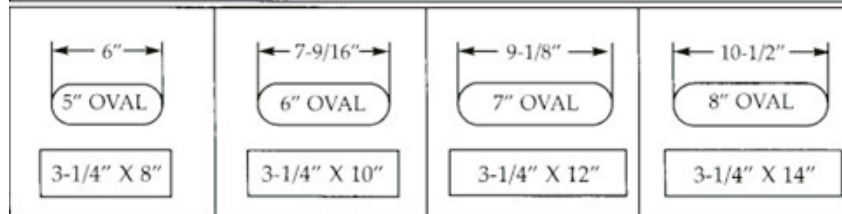
Fractions	Decimal Equivalent Inches	Fractions	Decimal Equivalent Inches	Fractions	Decimal Equivalent Inches	Fractions	Decimal Equivalent Inches
1/64	.0156	17/64	.2656	33/64	.5156	49/64	.7656
1/32	.0312	9/32	.2812	17/32	.5312	25/32	.7812
3/64	.0469	19/64	.2969	35/64	.5469	51/64	.7969
1/16	.0625	5/16	.3125	9/16	.5625	13/16	.8125
5/64	.0781	21/64	.3281	37/64	.5781	53/64	.8281
3/32	.0937	11/32	.3437	19/32	.5937	27/32	.8437
7/64	.1094	23/64	.3594	39/64	.6094	55/64	.8594
1/8	.1250	3/8	.3750	5/8	.6250	7/8	.8750
9/64	.1406	25/64	.3906	41/64	.6406	57/64	.8906
5/32	.1562	13/32	.4062	21/32	.6562	29/32	.9062
11/64	.1719	27/64	.4219	43/64	.6719	59/64	.9219
3/16	.1875	7/16	.4375	11/16	.6875	15/16	.9375
13/64	.2031	29/64	.4531	45/64	.7031	61/64	.9531
7/32	.2187	15/32	.4687	23/32	.7187	31/32	.9687
15/64	.2344	31/64	.4844	47/64	.7344	63/64	.9844
1/4	.2500	1/2	.5000	3/4	.7500	1.0	1.0000

CFM COMPARISON CHART

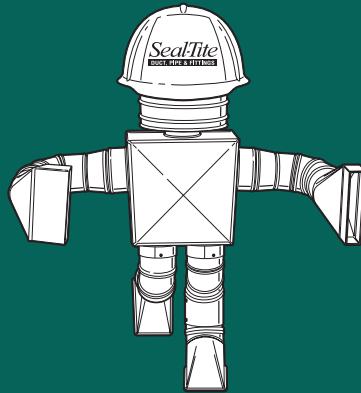
CFM Oval - Round - Stack

CFM Oval Duct - .1 Static			
Branch Duct	Circumference (Total Inches)	Area Sq Inches	Capacity (CFM) .1 SP
5in Round	15.7	19.6	68
6in Round	18.8	28.3	108
7in Round	22.0	38.5	160
5in Oval	15.7	17.2	60
6in Oval	18.8	22.2	78
7in Oval	22.0	27.3	104
2 1/4 x 10 Stack	24.5	22.5	63
2 1/4 x 12 Stack	28.5	27.0	70
3 1/4 x 10 Stack	26.5	32.5	96
3 1/4 x 12 Stack	30.5	39	120

WALL STACK VS. OVAL PHYSICAL COMPARISON



SealTite®



IF IT FITS RIGHT,

LOOKS RIGHT

STAYS RIGHT

AND IS LEAK-TITE –

IT'S SEAL-TITE.

Seal-Tite[®]
DUCT, PIPE & FITTINGS



Seal-Tite[®]
DUCT, PIPE & FITTINGS

*America's Premier
Air Distribution
Systems*

120 Moore Rd.

Hillsboro, OH 45133

1-800-582-9025

Phone: (937) 393-4268

Fax: (937) 393-1262

Toll Free Fax: 1-800-543-4673

www.sealtitehvac.com